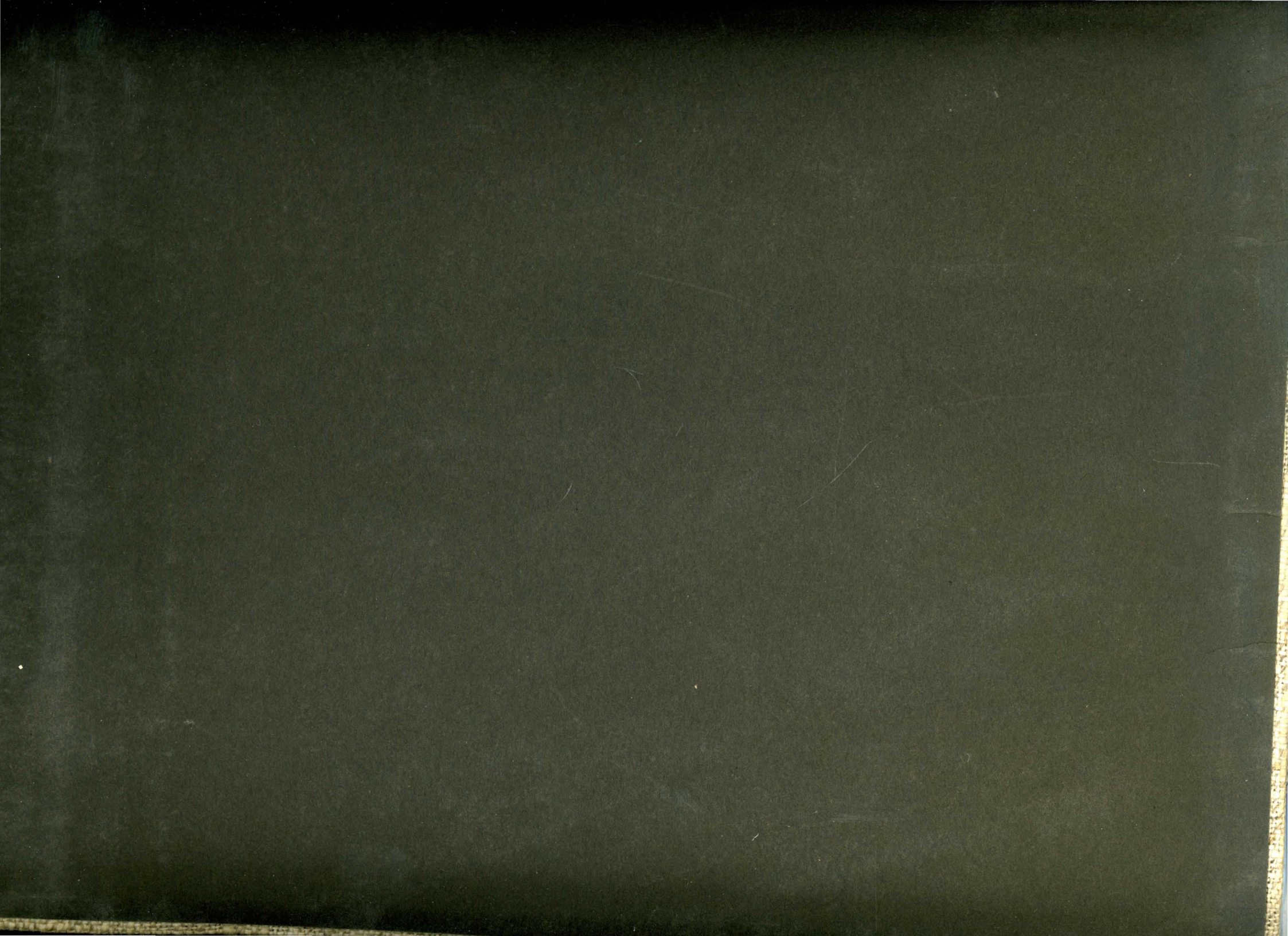


**ASILO D'INFANZIA
PER IL RIONE
SANT'ELIA - COMO
21 MAGGIO XIV**



LIBERTAS



d/ 727.111 (450.25) TER

72.036 (ERRA) NITER ~~216~~

727.1 TER

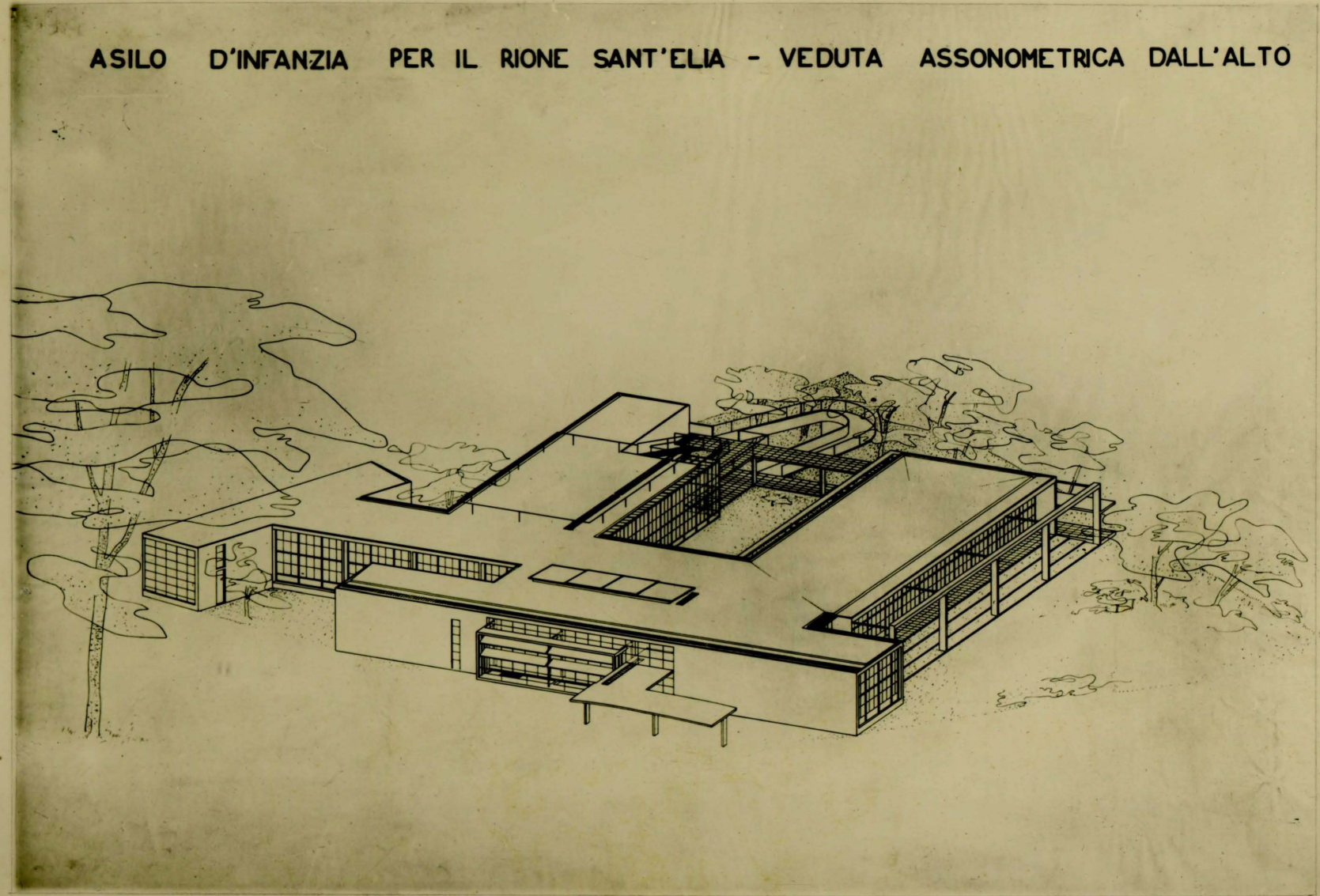


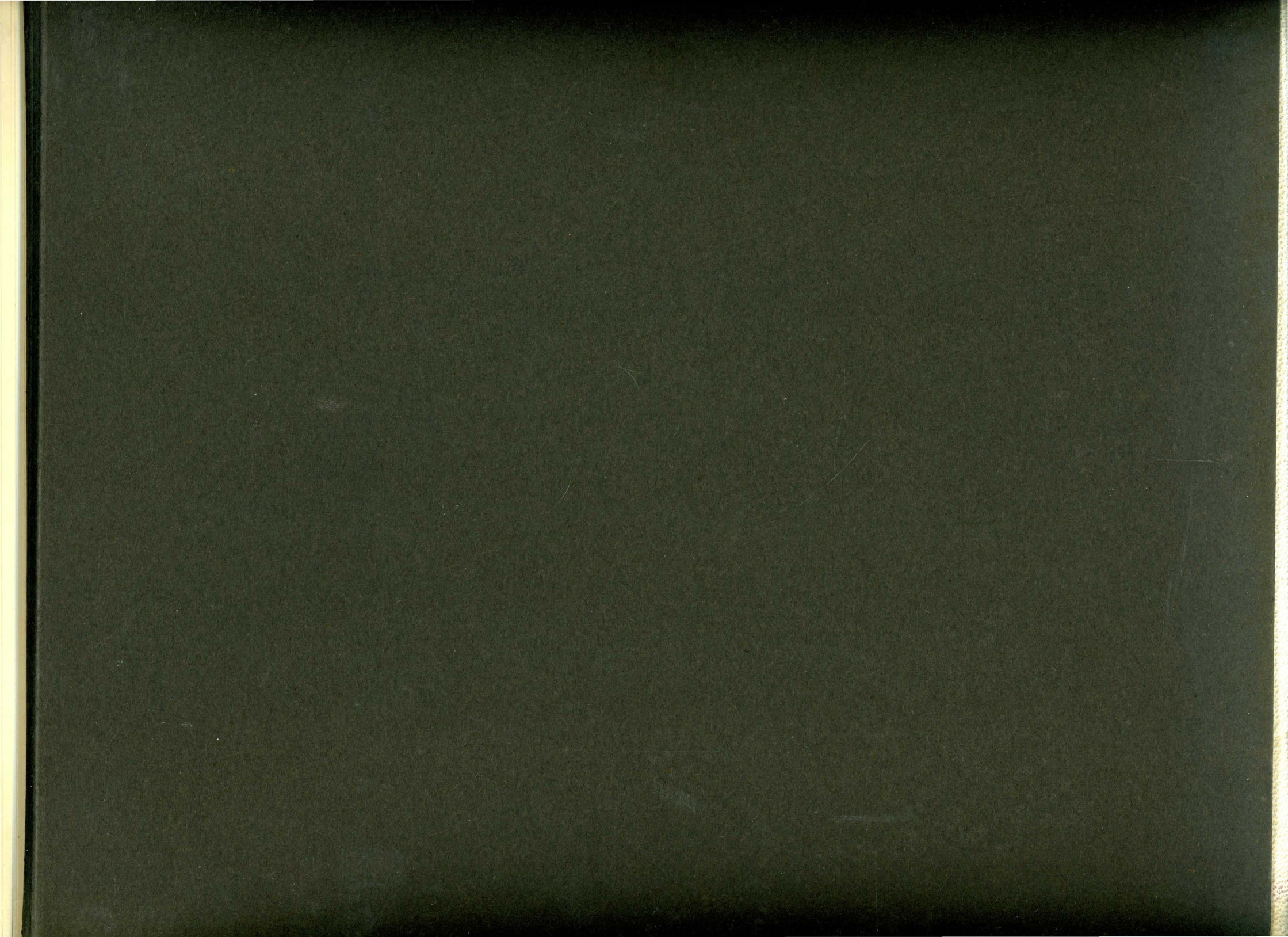


VERIFICA INVENTARIO 8-2-73
F.to *Dej*

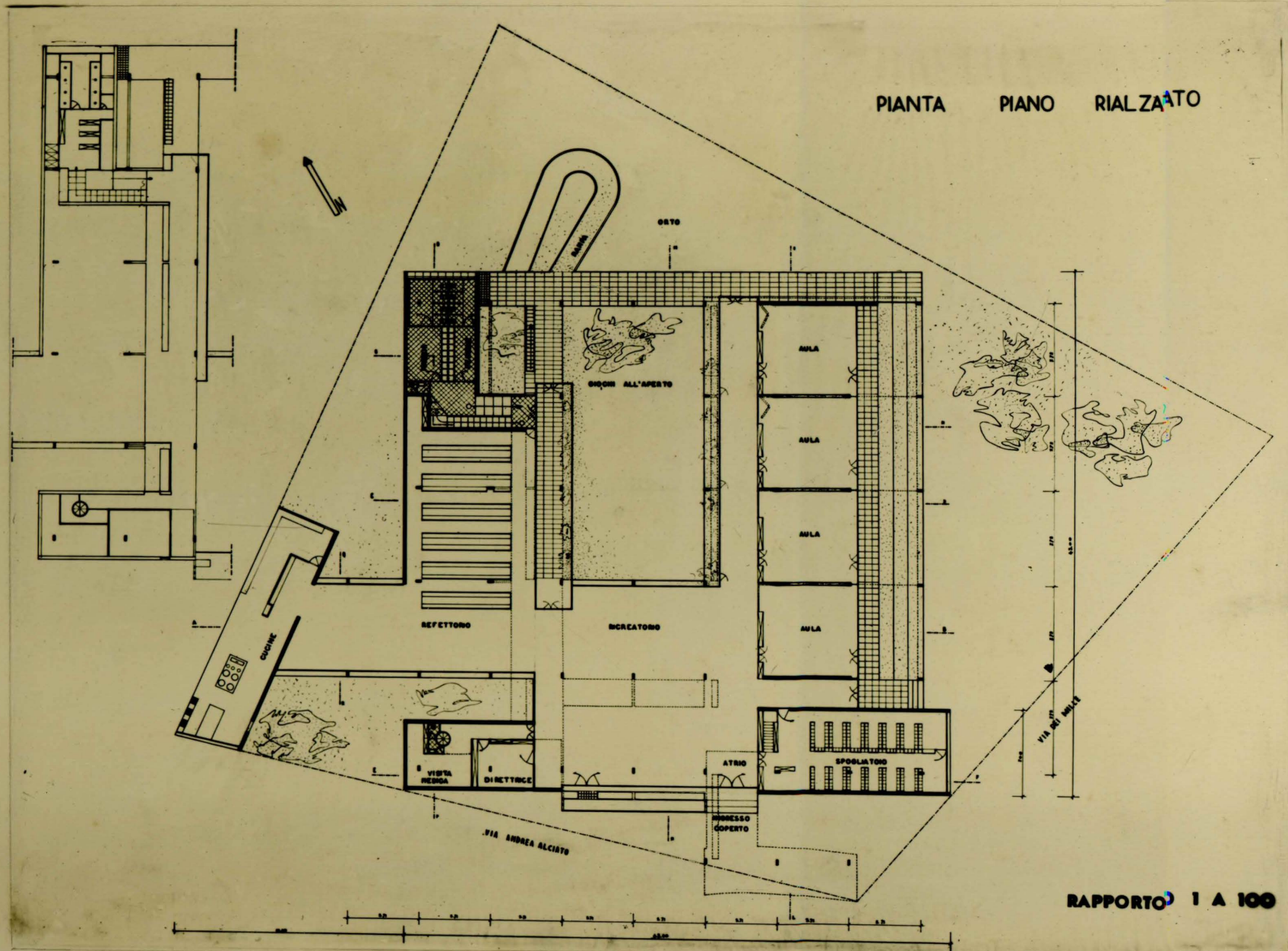
2435/B

ASILO D'INFANZIA PER IL RIONE SANT'ELIA - VEDUTA ASSONOMETRICA DALL'ALTO

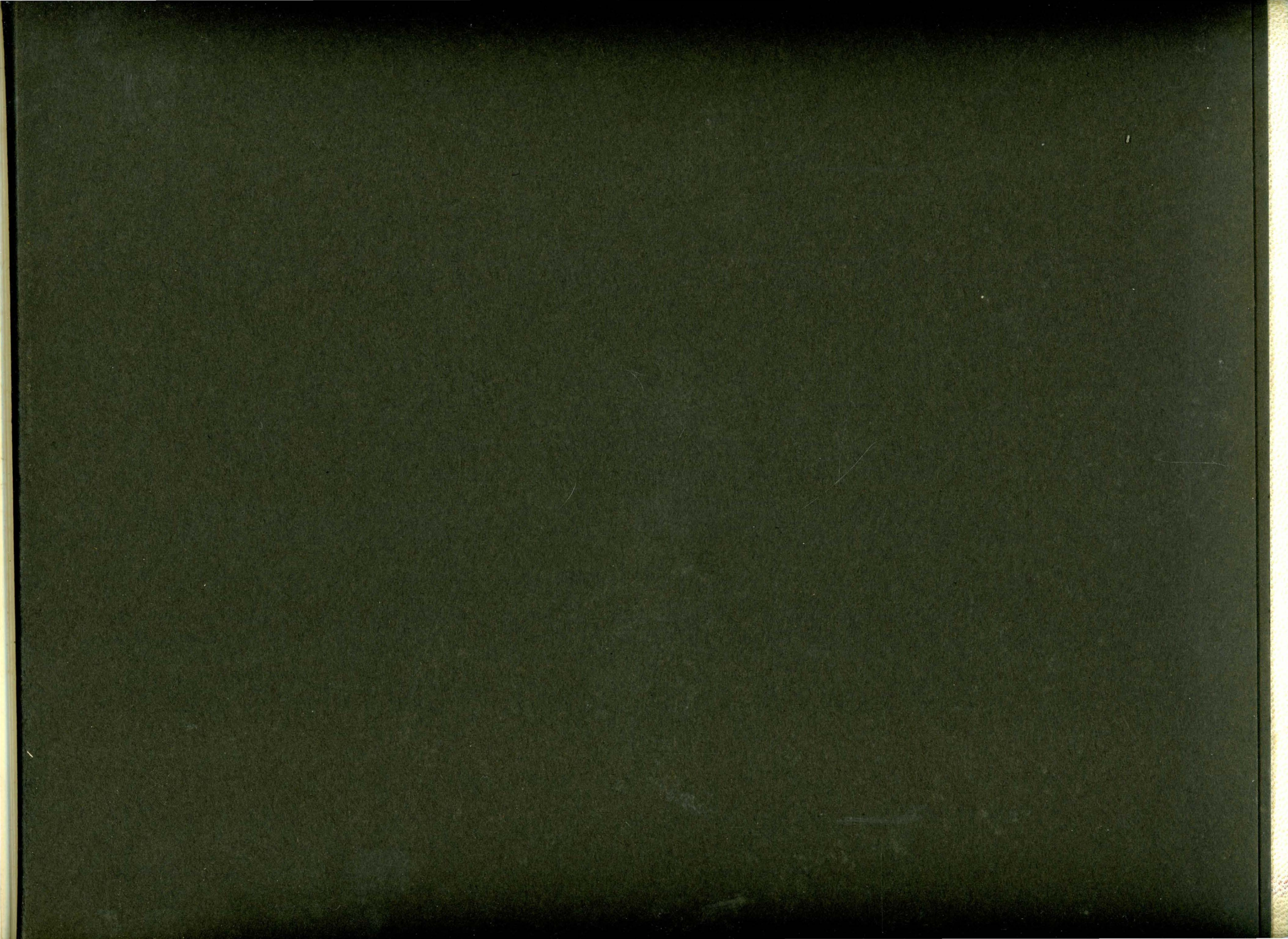




PIANTA PIANO RIALZATO

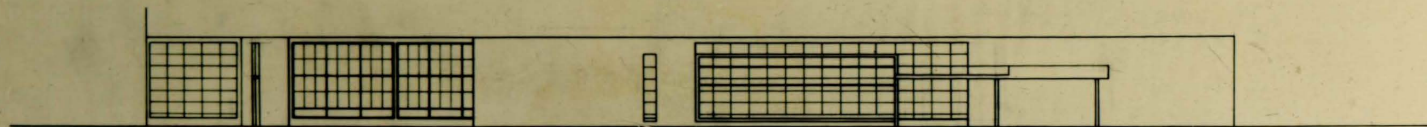


RAPPORTO 1 A 100



ASILO D'INFANZIA PER IL RIONE SANT'ELIA

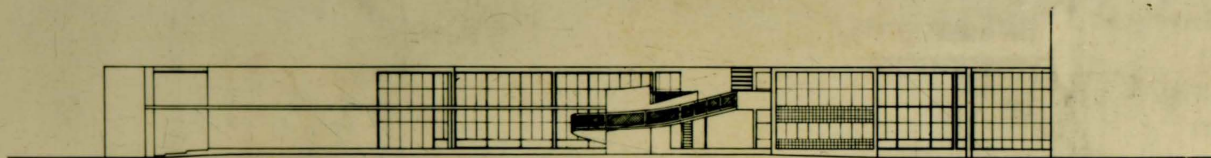
PROSPETTO VERSO VIA A. ALCIATO



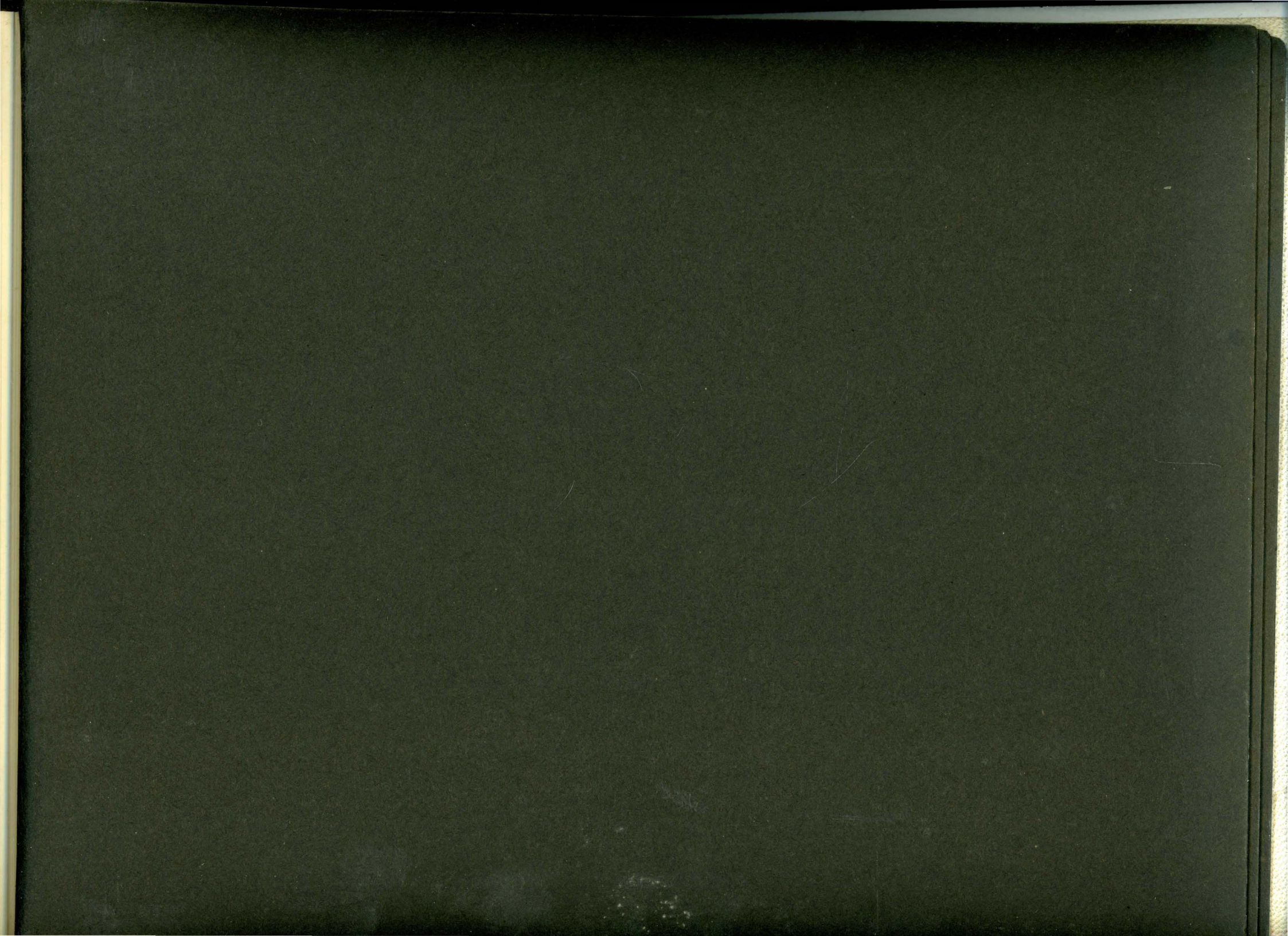
PROSPETTO VERSO VIA DEI MILLE



PROSPETTO FACCIATA POSTERIORE

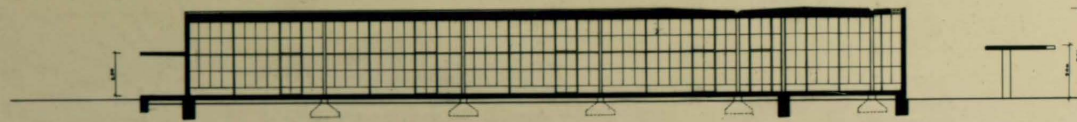


RAPPORTO 1 A 100

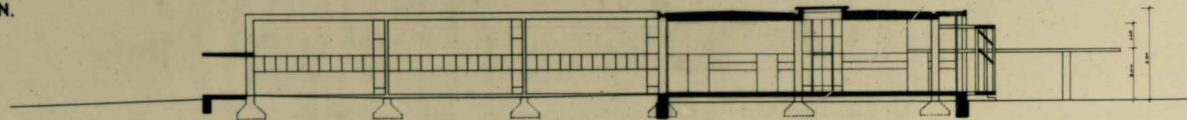


ASILO D'INFANZIA PER IL RIONE SANT'ELIA

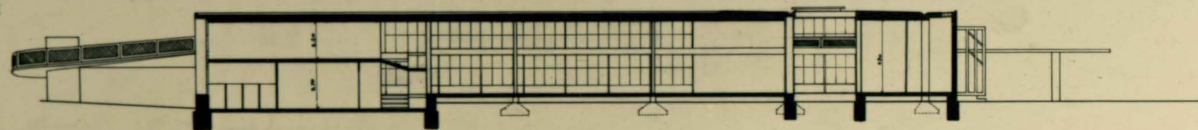
SEZIONE I.L.



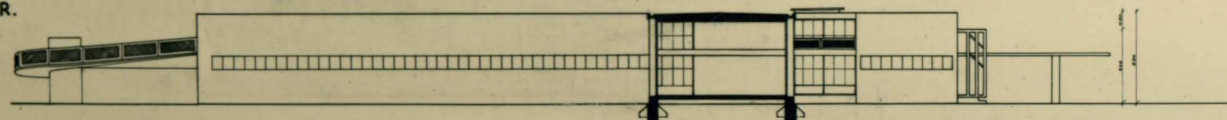
SEZIONE M.N.



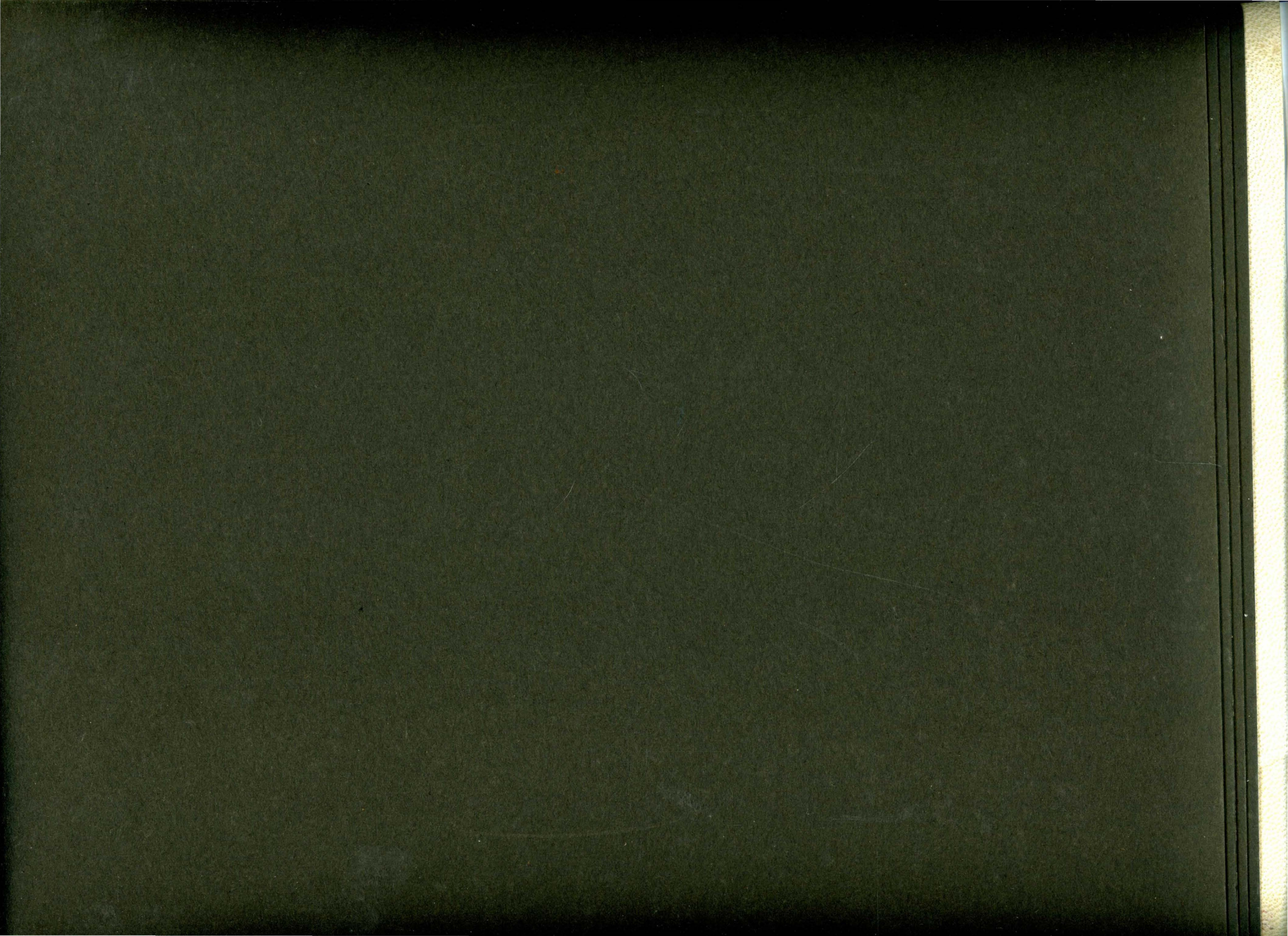
SEZIONE O.P.



SEZIONE O.R.

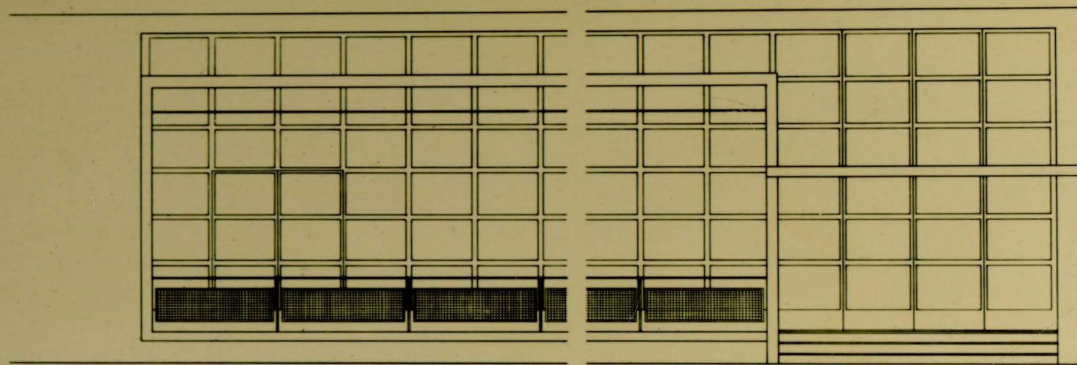


RAPPORTO 1 A 100

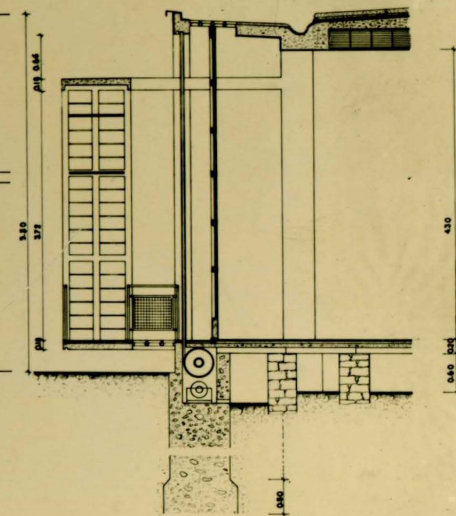


ASILO D'INFANZIA
PER IL RIONE S. ELIA

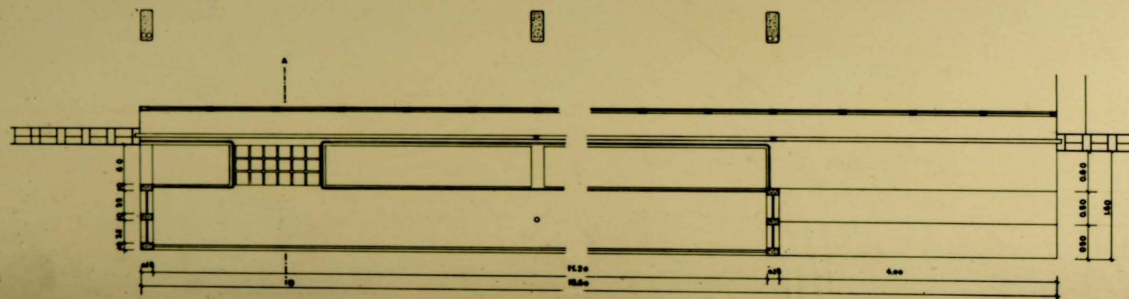
PROSPETTO



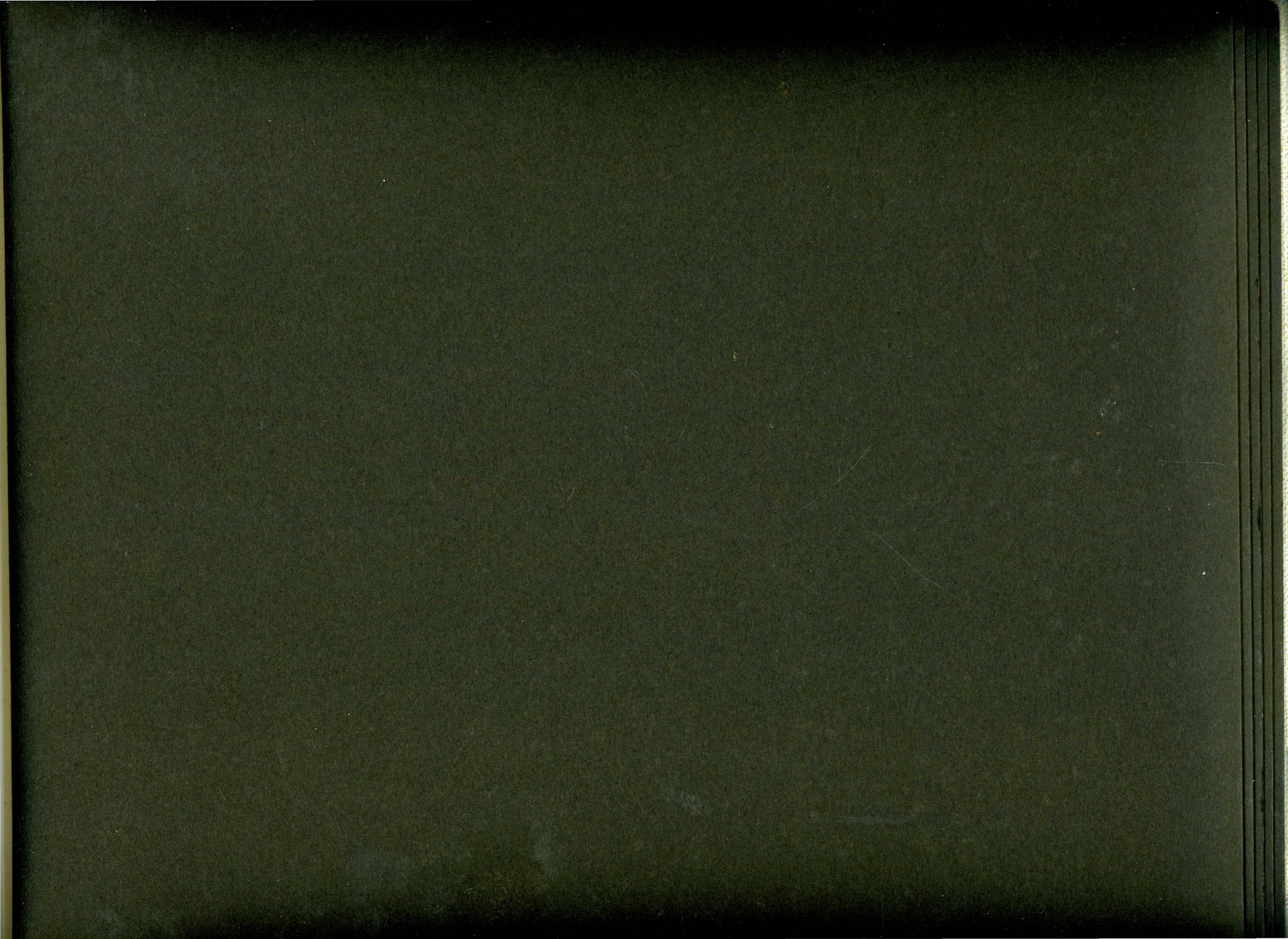
SEZIONE A.B.



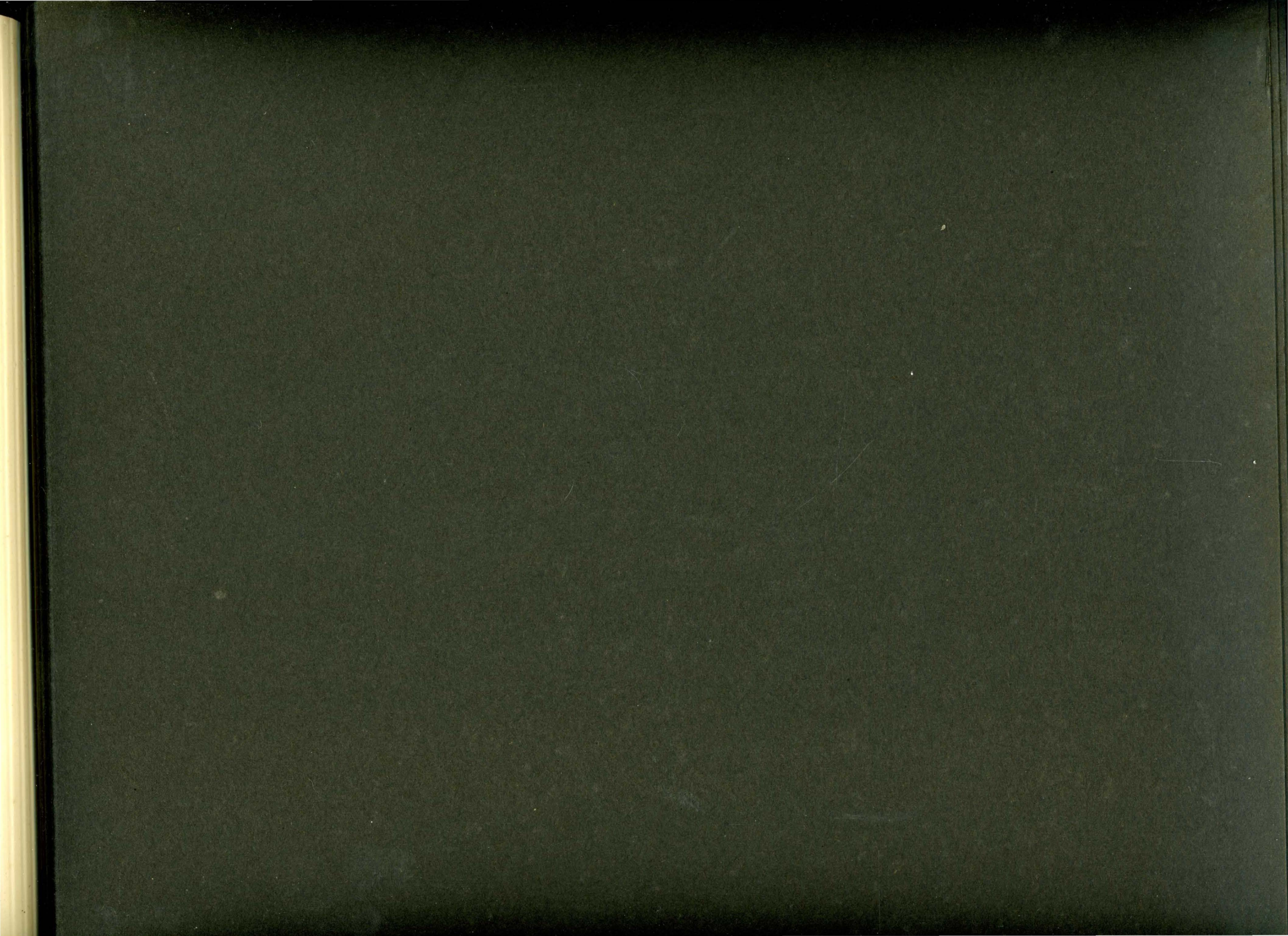
PIANTA



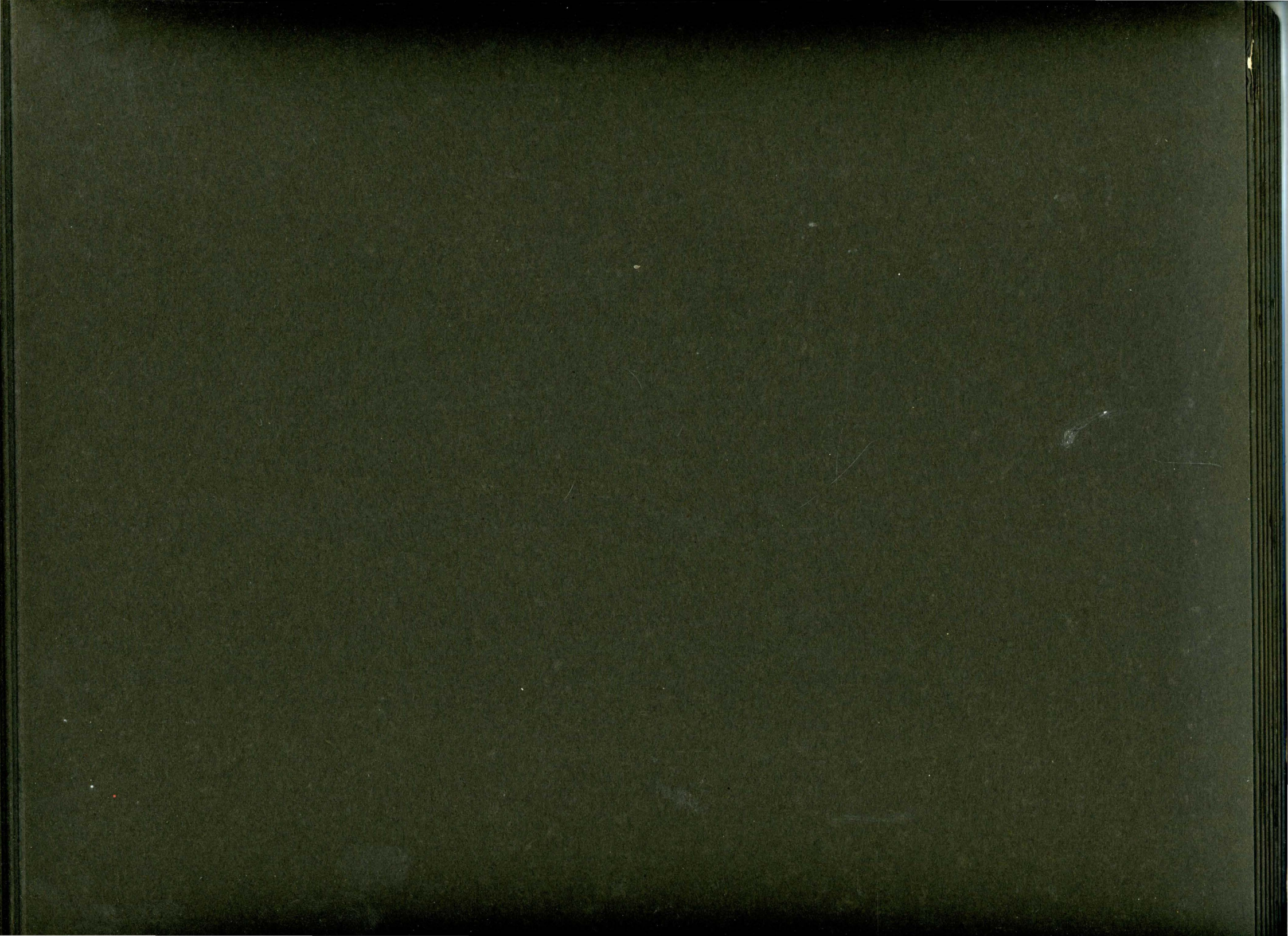
RAPPORTO 1:20

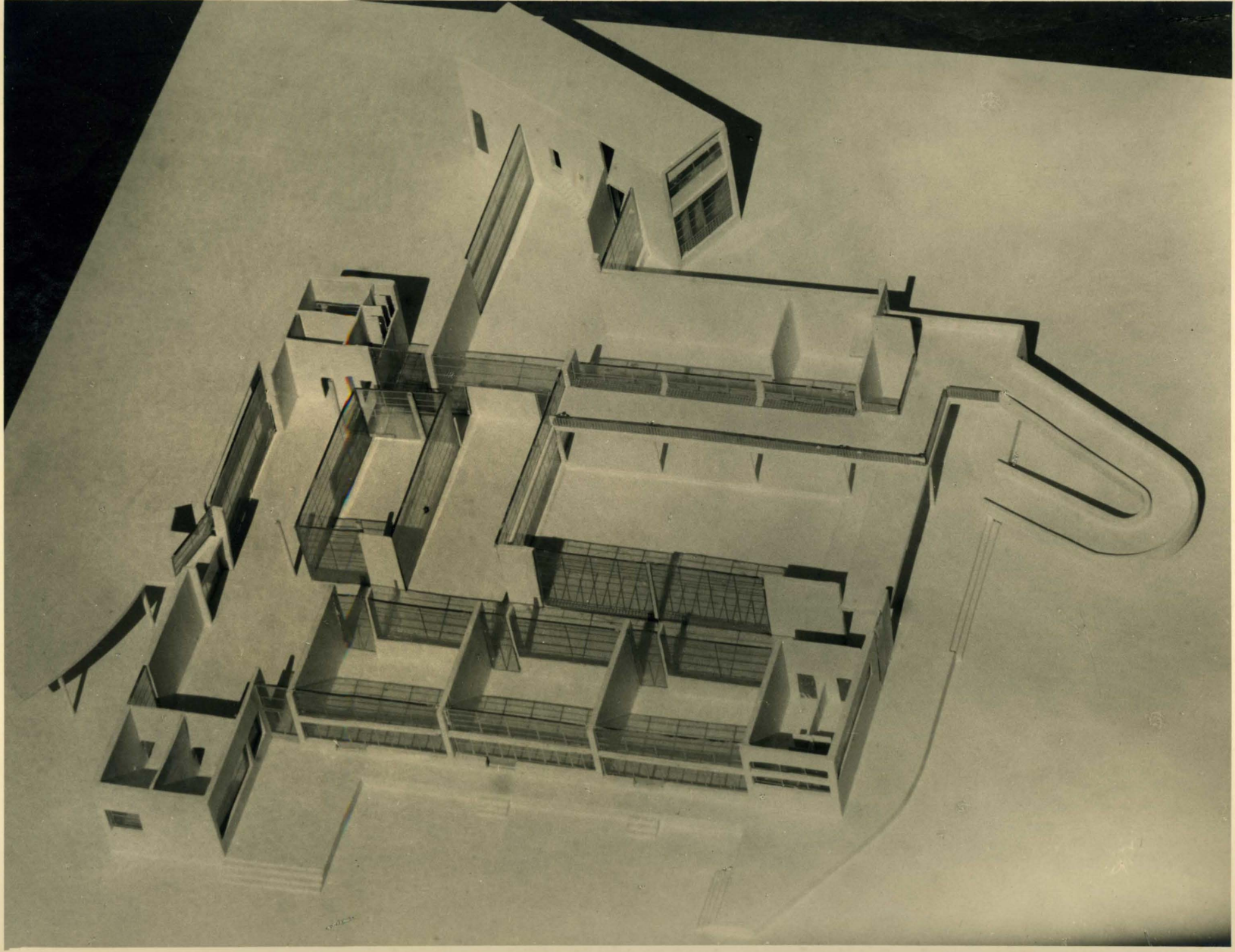


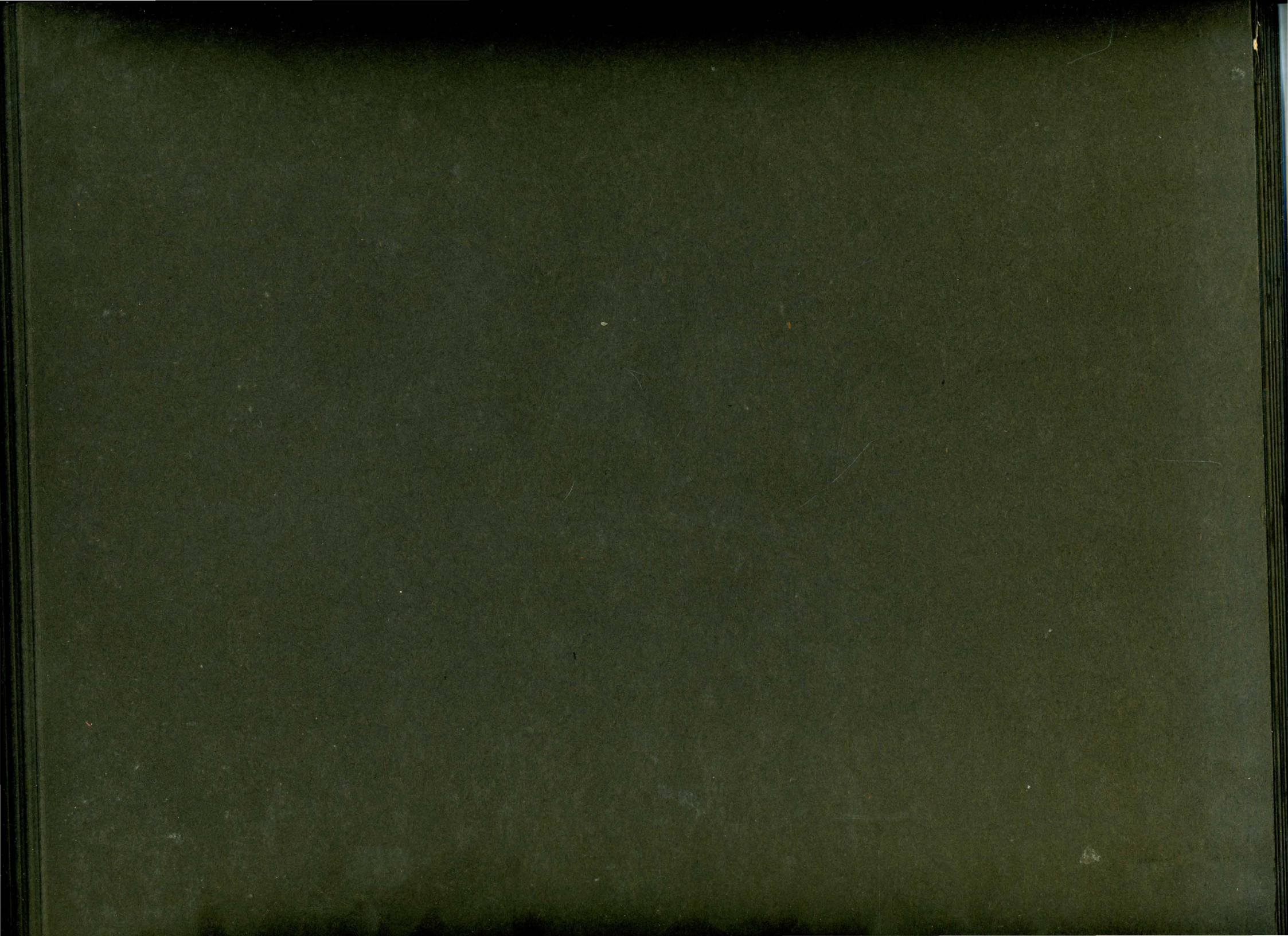












TIPOGRAFIA
L OMARINI
DI NOSEDA
ANTONIO
TELEF. 48-54
VIA CANTÙ 45
C O M O
LIBRERIA

SCAFFALE

