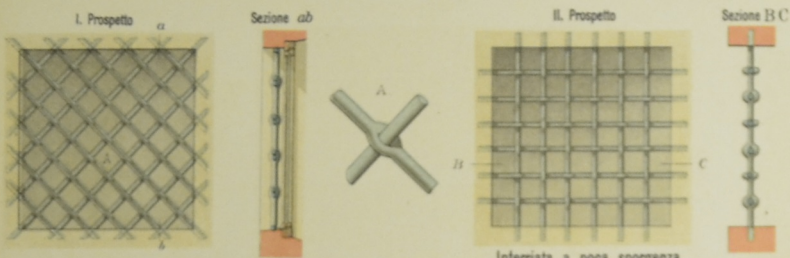


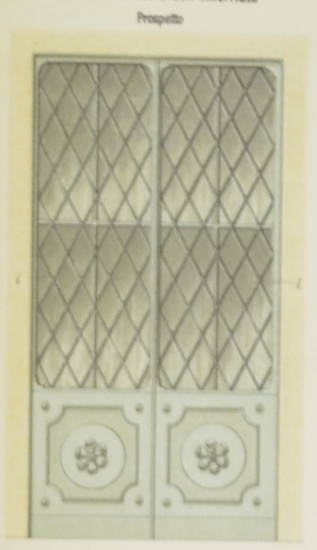
Inferriate di sicurezza



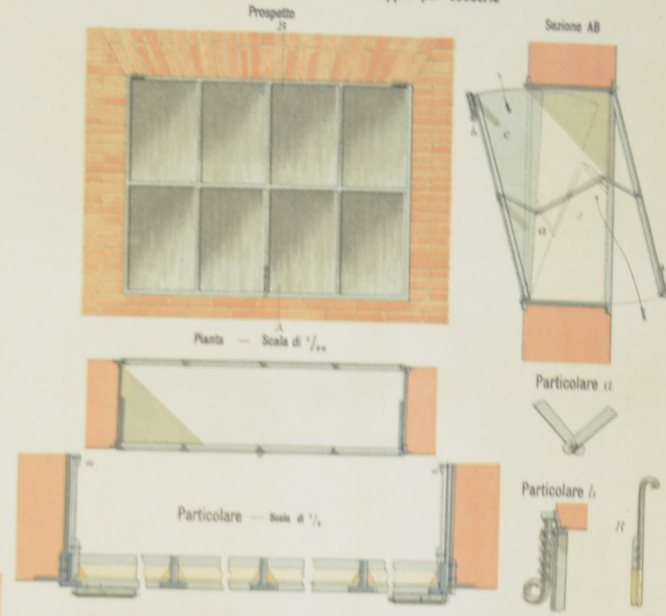
Chiassile in legno con inferriata



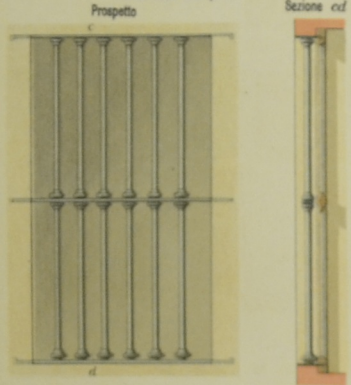
Chiassile in ferro con inferriata



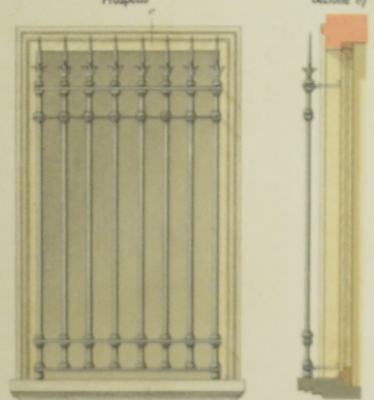
Vetrata doppia per scuderie



Inferriata semplice



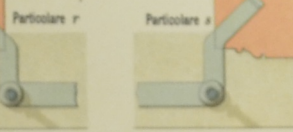
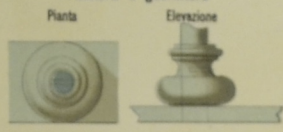
Inferriata a poca sporgenza



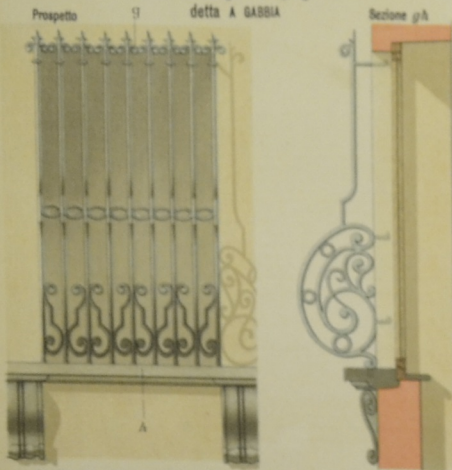
Finestra con chiassile in ferro semplice



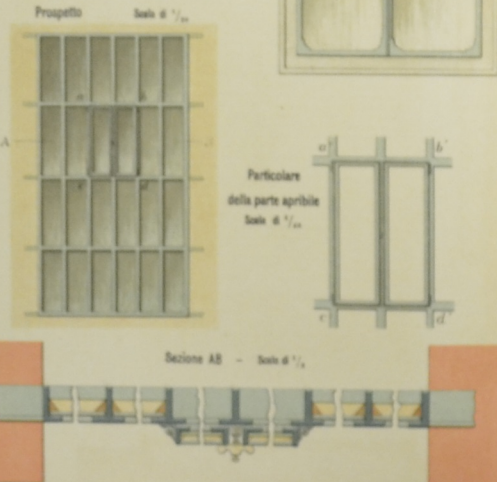
Passante o guernitura



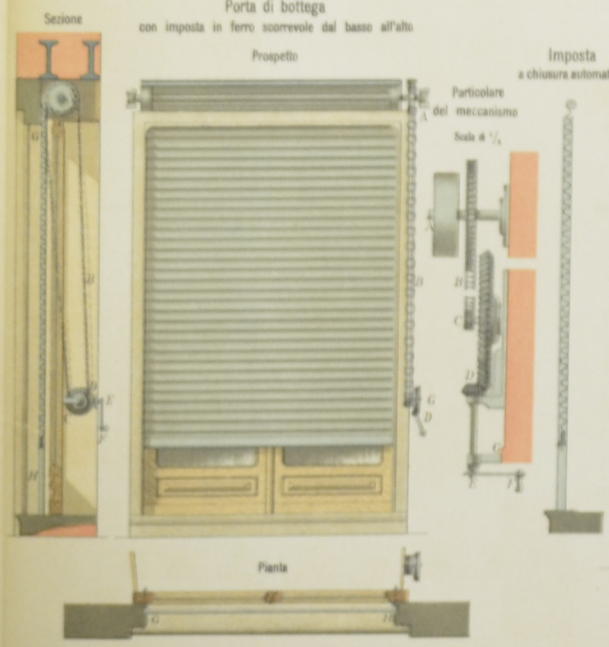
Inferriata a grande sporgenza detta A GABBIA



Telaio a vetri formante inferriata



Porta di bottega con imposta in ferro scorrevole dal basso all'alto

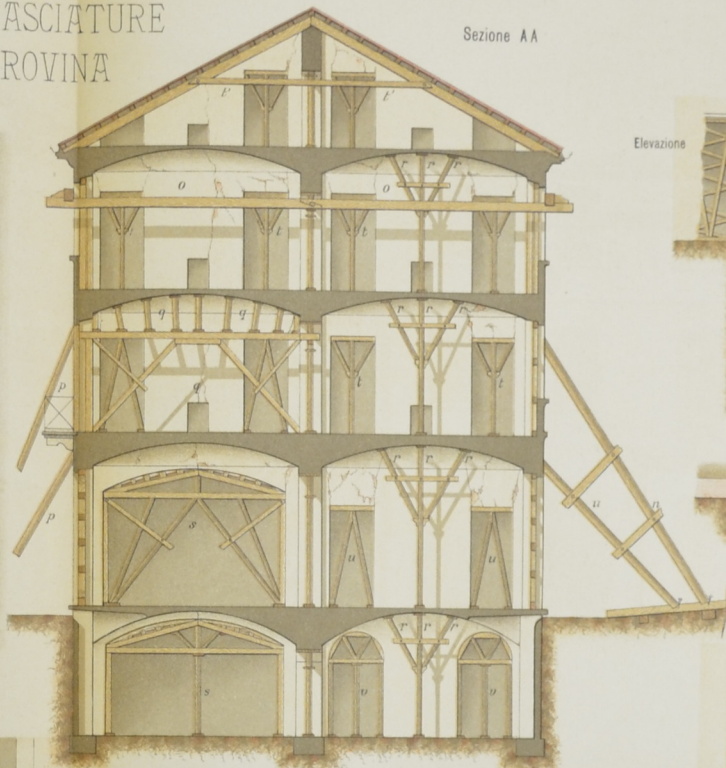
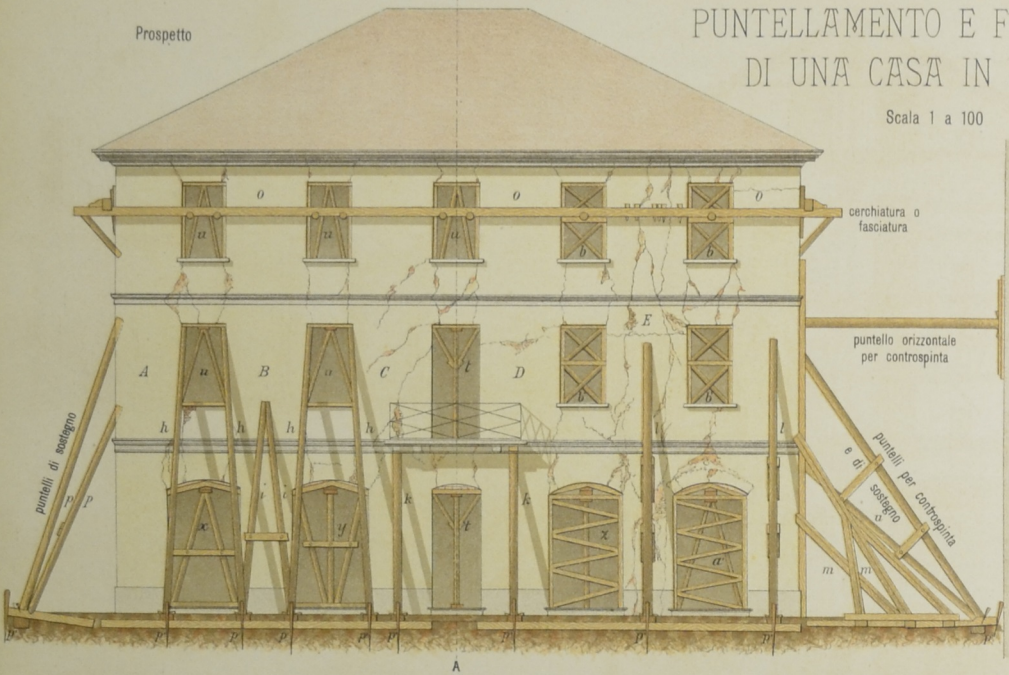


Porta di bottega con imposta a saliscendi



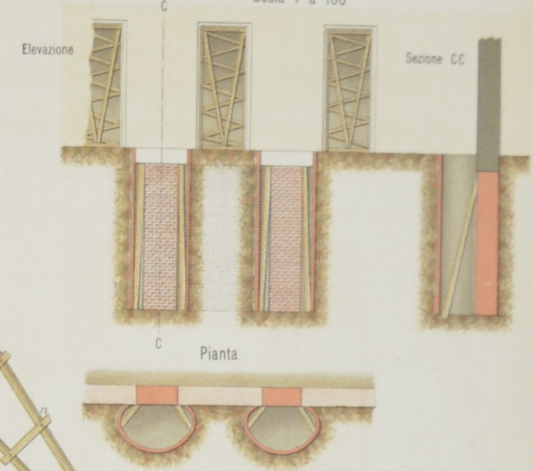
## PUNTELLAMENTO E FASCIATURE DI UNA CASA IN ROVINA

Scala 1 a 100



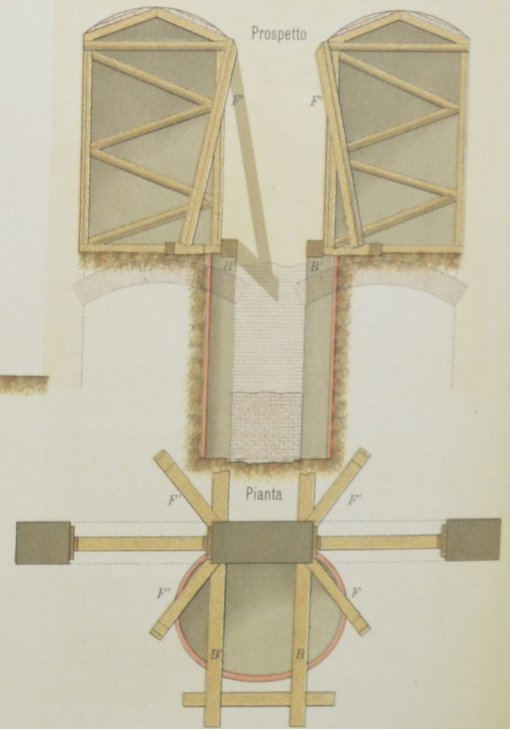
### (2° Caso) Sottofondazione per formazione di sotterranei

Scala 1 a 100



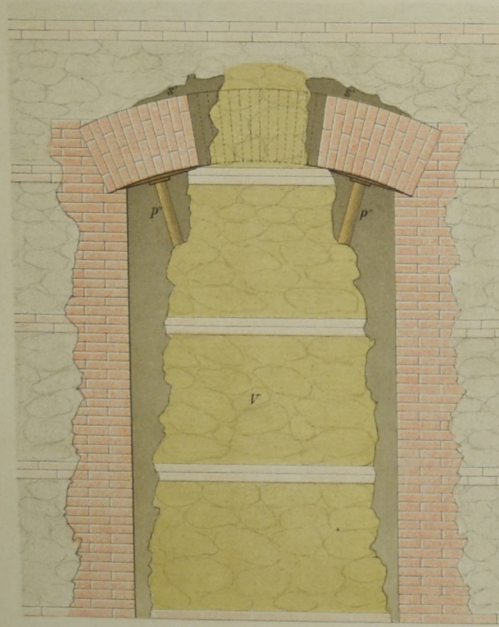
### (3° Caso) Sottomurazione di pilastro tra due aperture

Scala 1/50



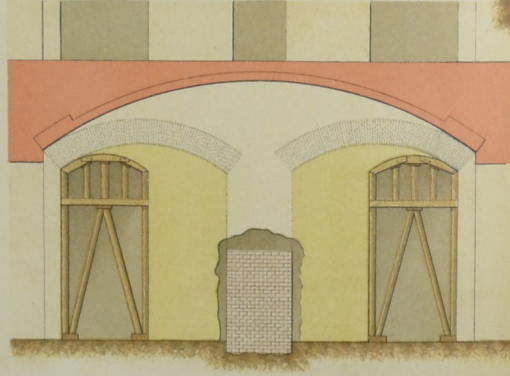
### Formazione di apertura in rottura

Scala 1 a 20

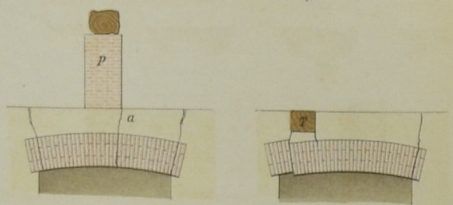


### Formazione di pilastro ed archi in breccia

Scala di 1/50

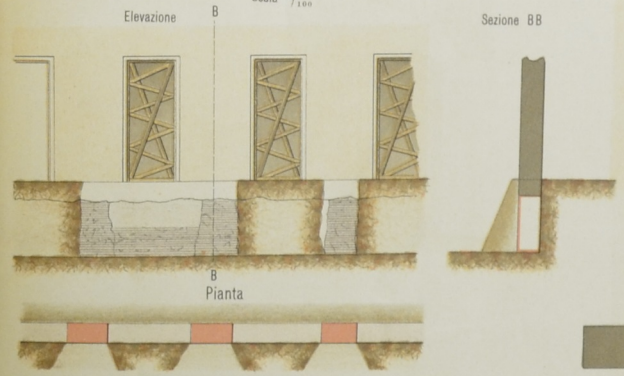


### Effetti di carico eccessivo o mal disposto sui volti



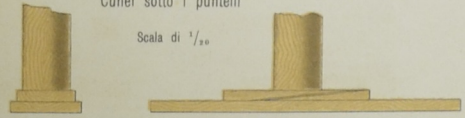
### (1° Caso) Sottofondazione di muro con apertura a piccola profondità

Scala 1/100



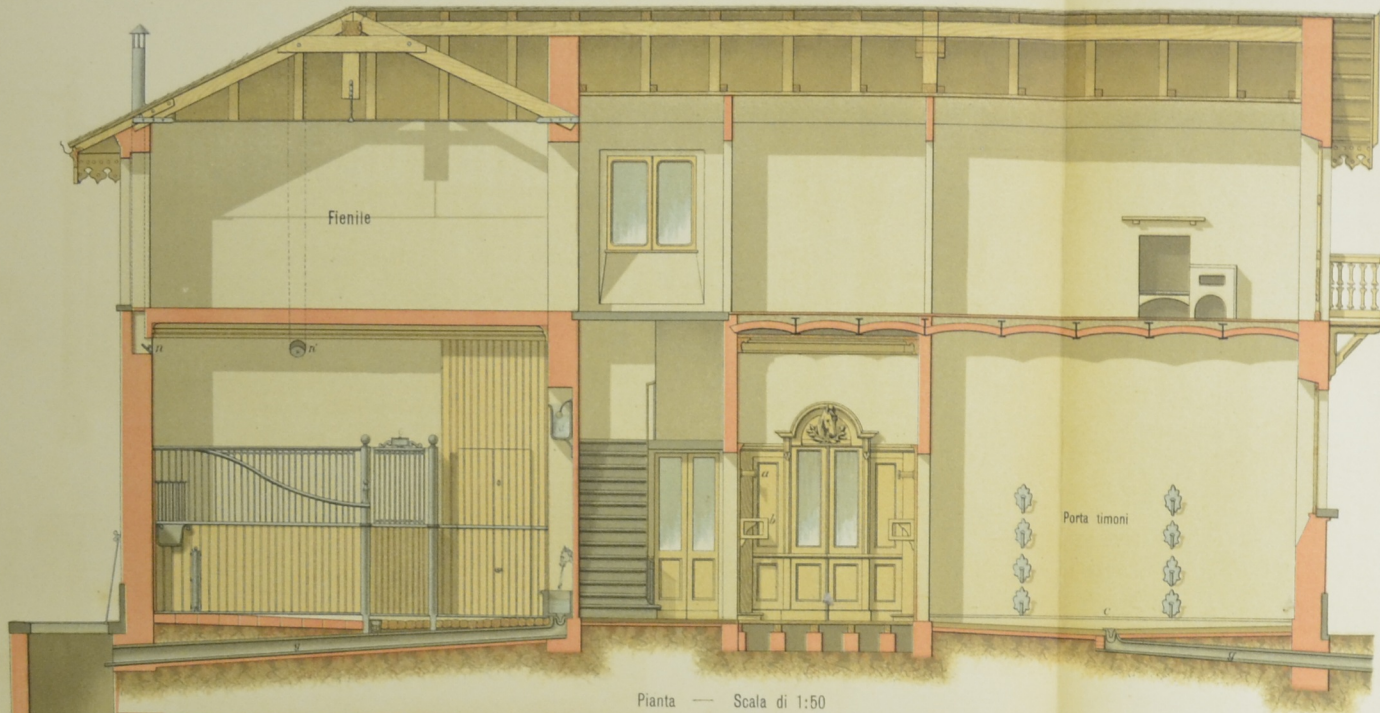
### Particolari del Puntellamento Cunei sotto i puntelli

Scala di 1/50

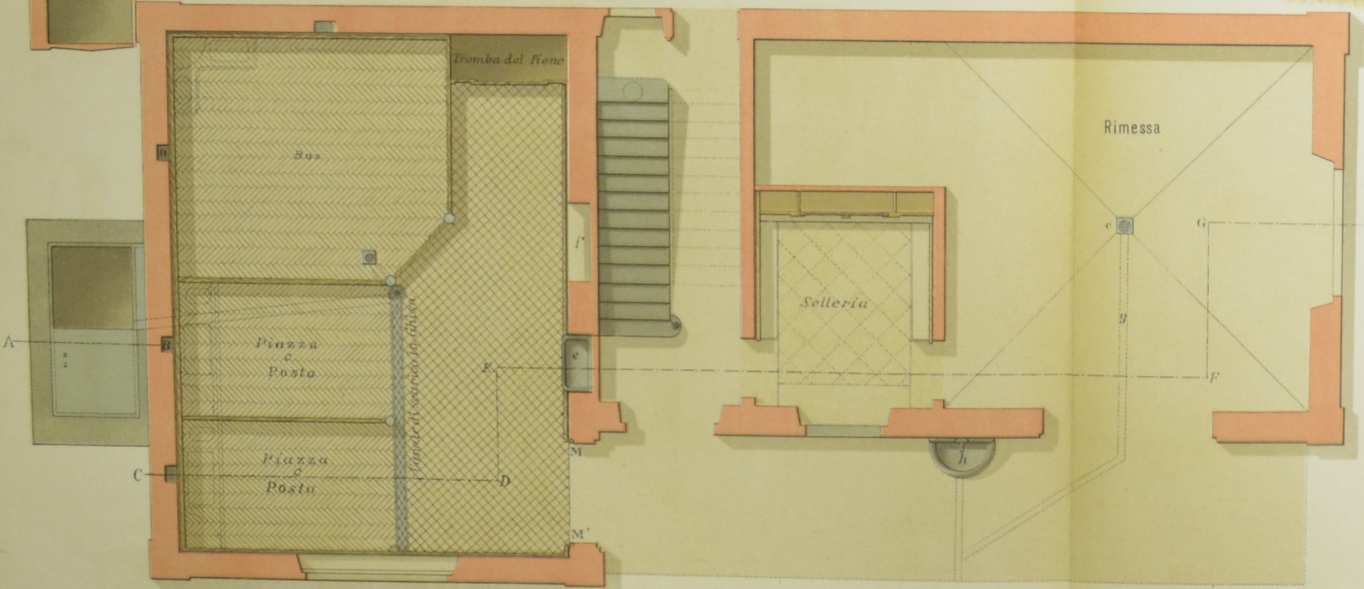


# SCUDERIE

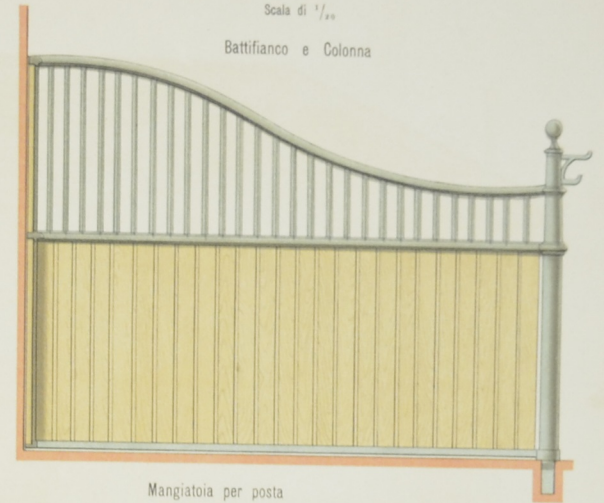
Sezione ABCDEFGH



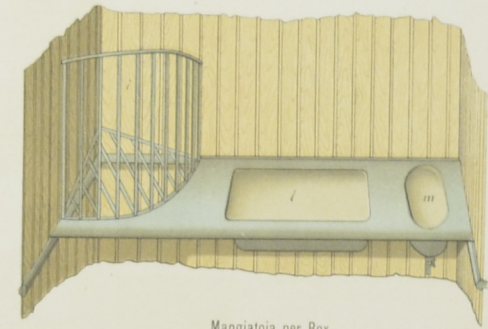
Pianta — Scala di 1:50



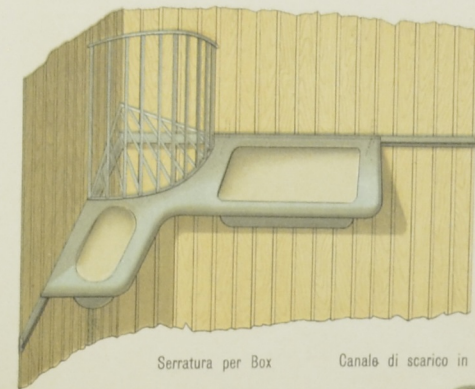
Particolari  
Scala di 1/20  
Battifianco e Colonna



Mangiatoia per posta



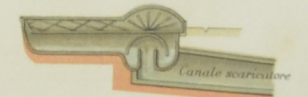
Mangiatoia per Box



Serratura per Box



Canale di scarico in ghisa con Sifone

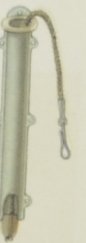


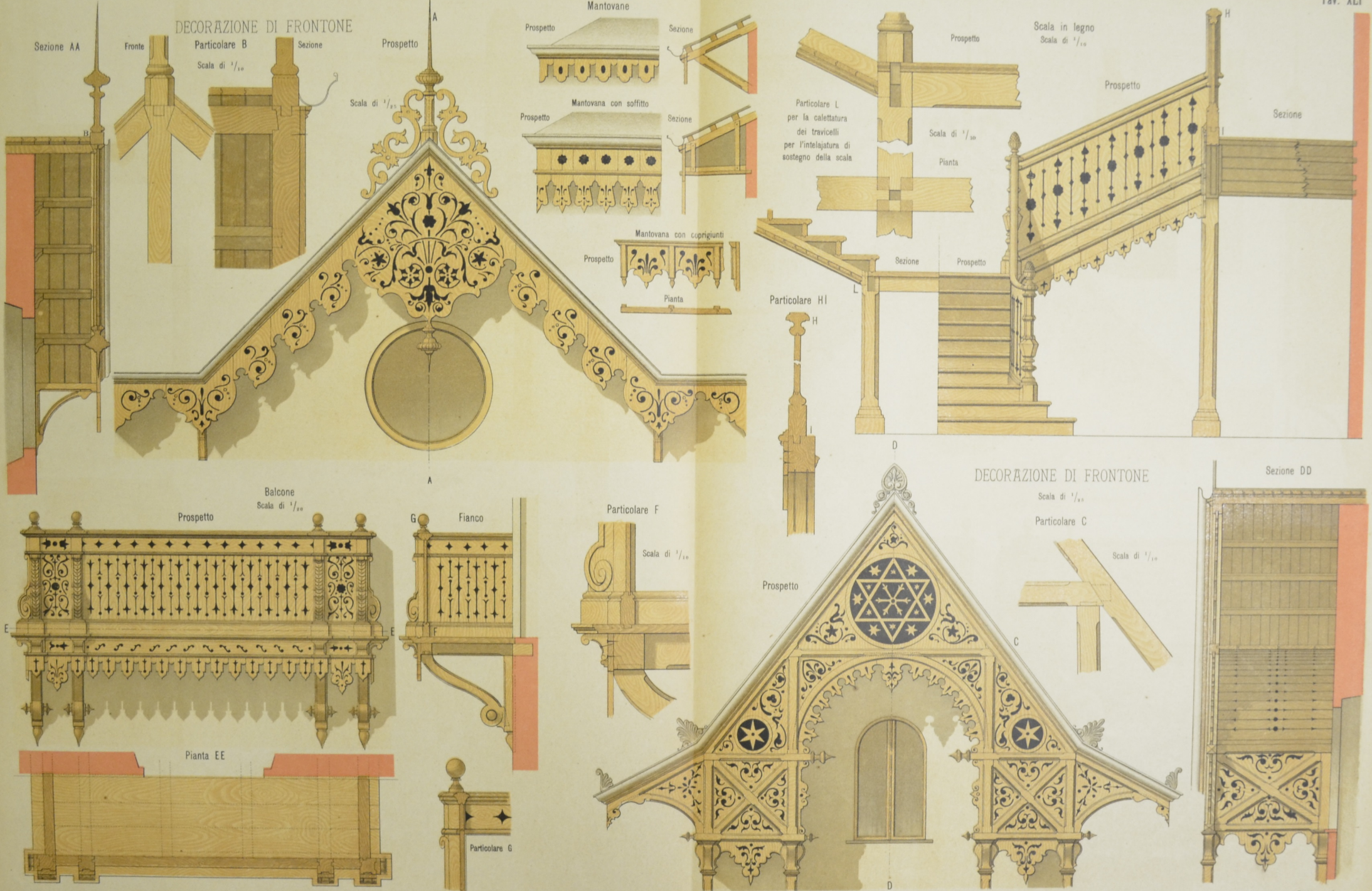
Proprietà Artistico-Letteraria

Rulli MM



Catena L per attaccare i cavalli



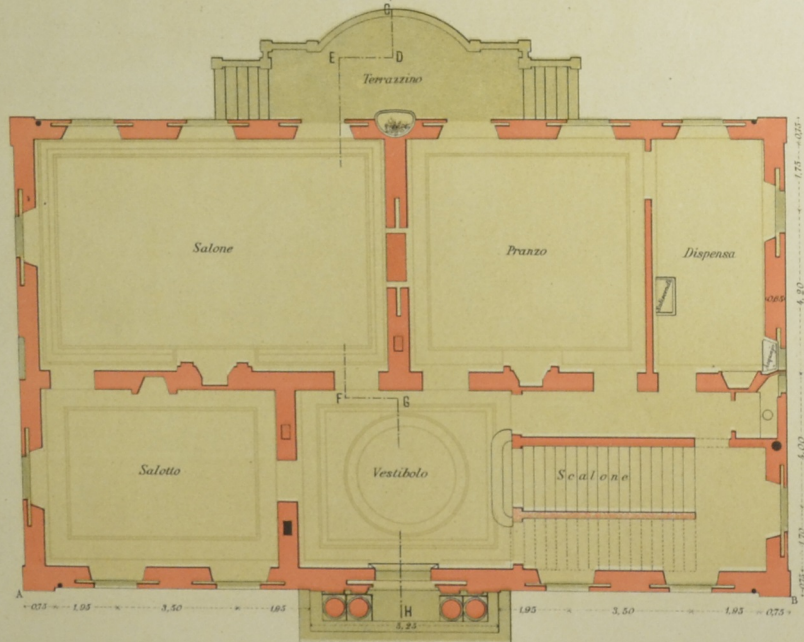




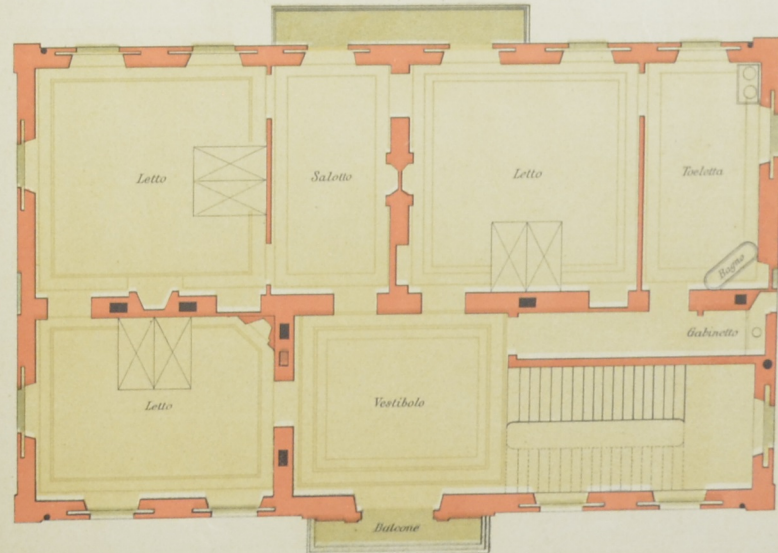
Scala di 1 a 100

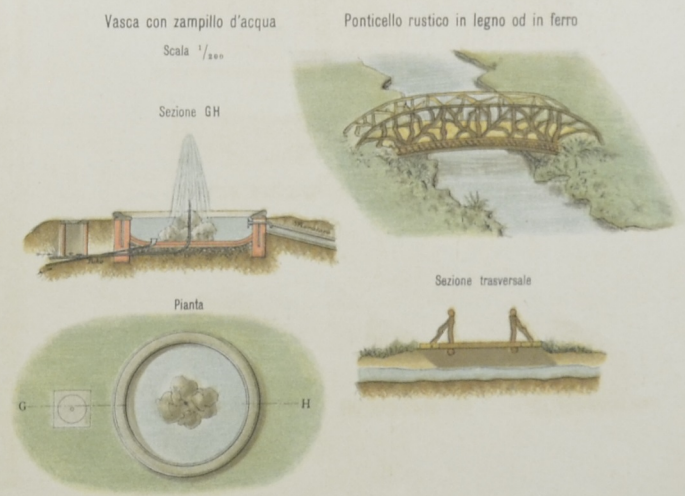
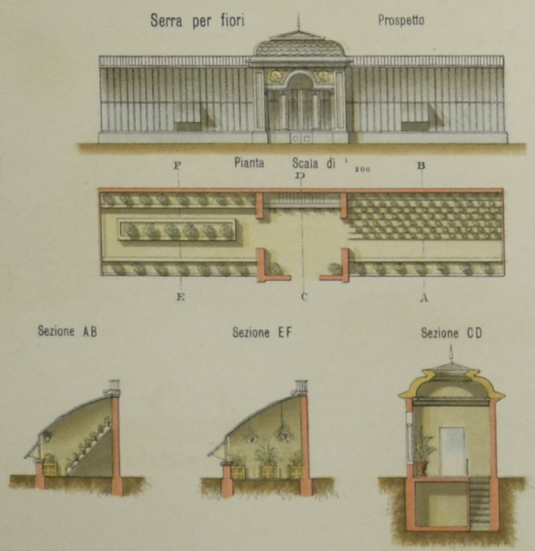
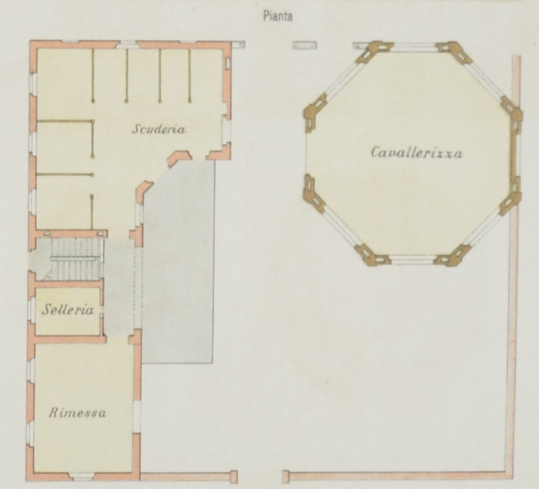
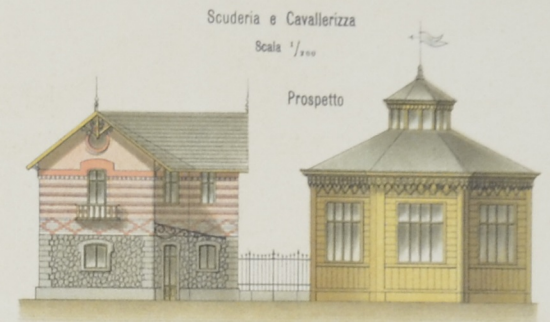
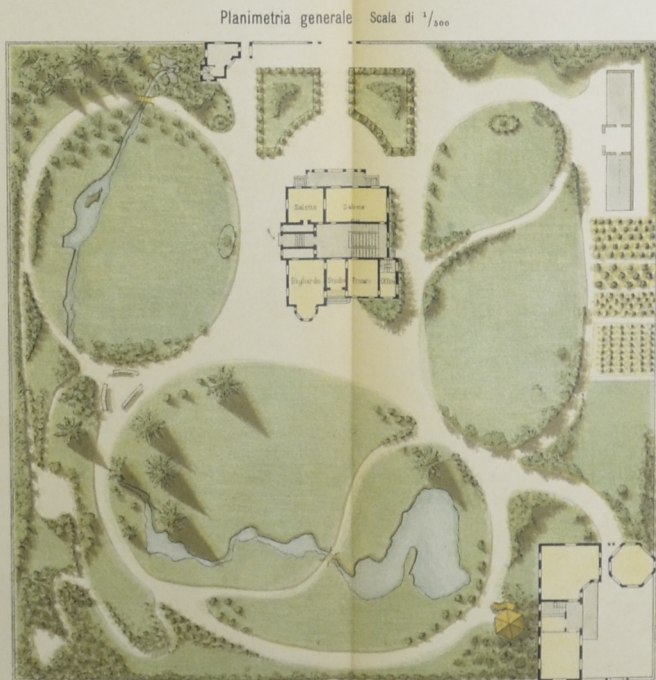
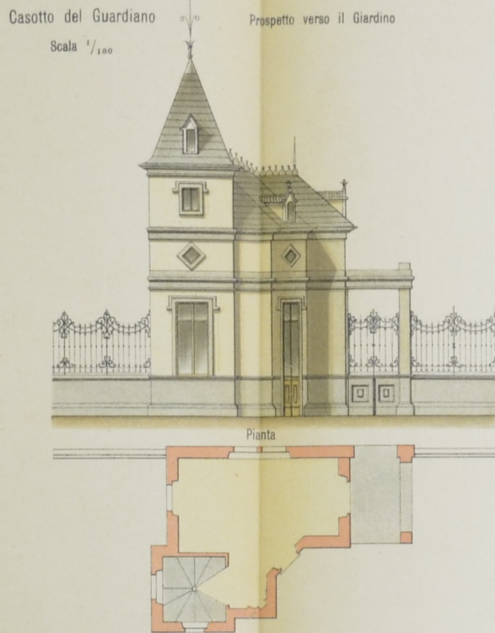
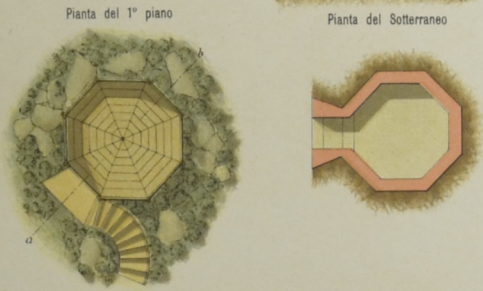
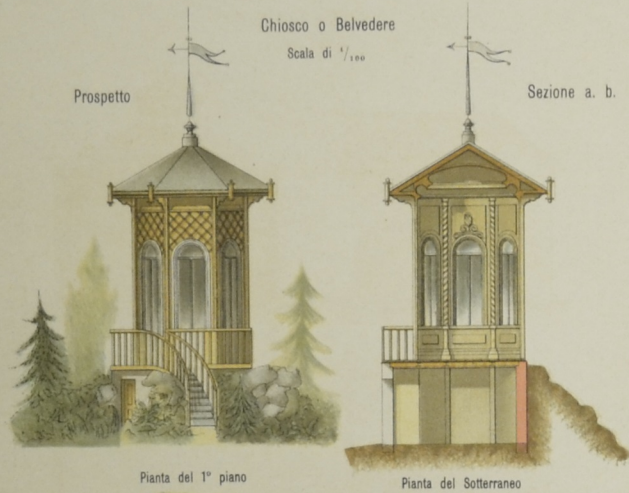


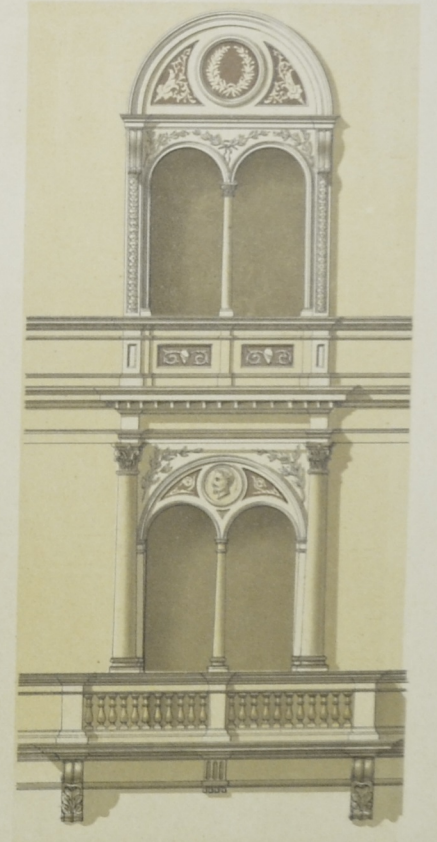
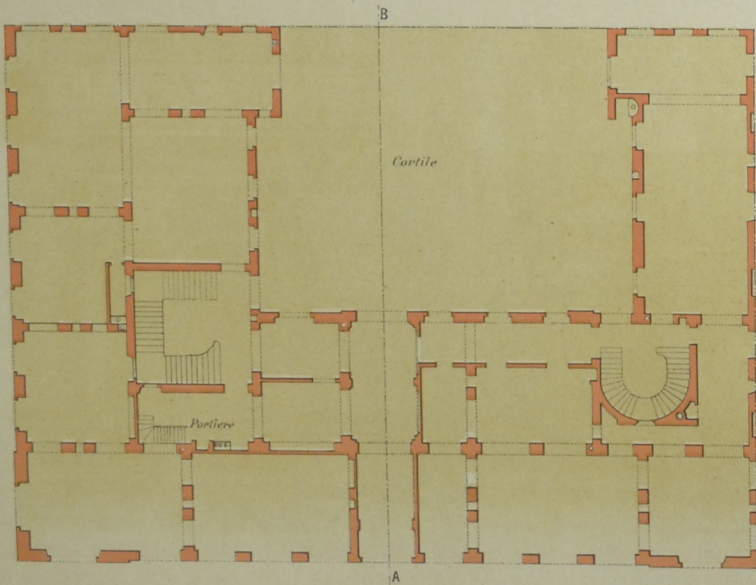
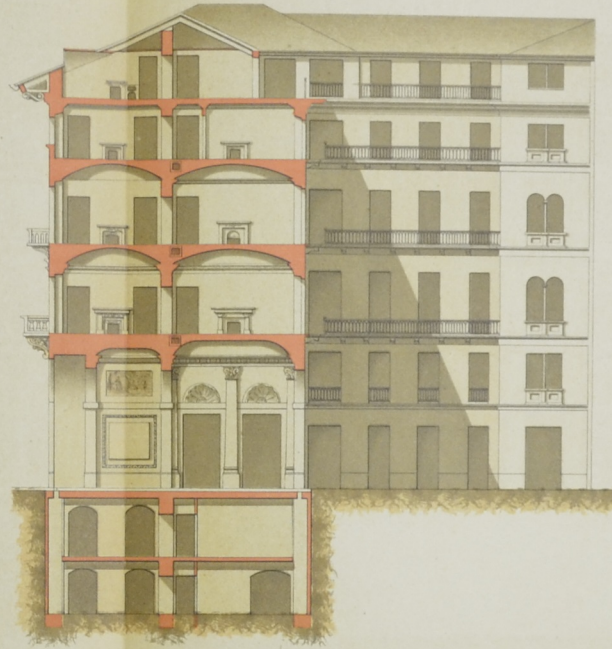
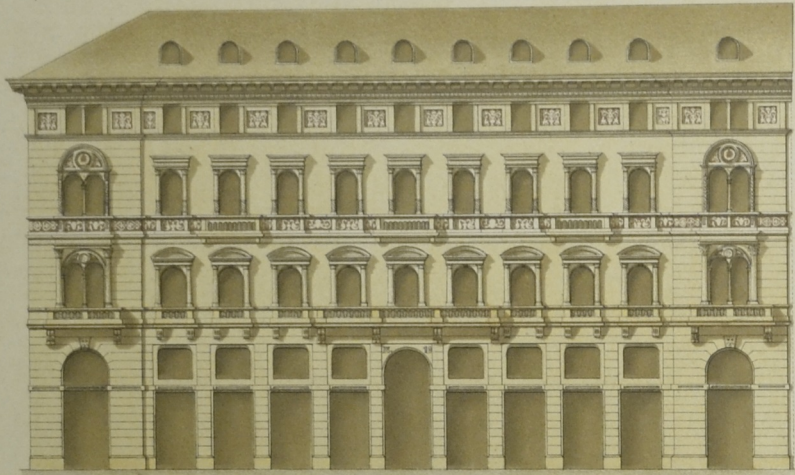
Pianta del piano terreno



Pianta del primo piano



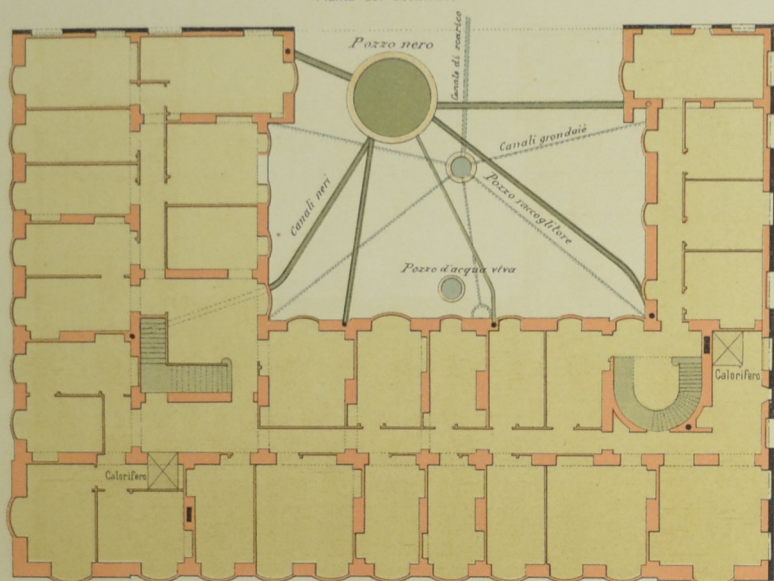




# PROGETTO DI UNA CASA DA PIGIONE

Piante — Scala di 1 a 200

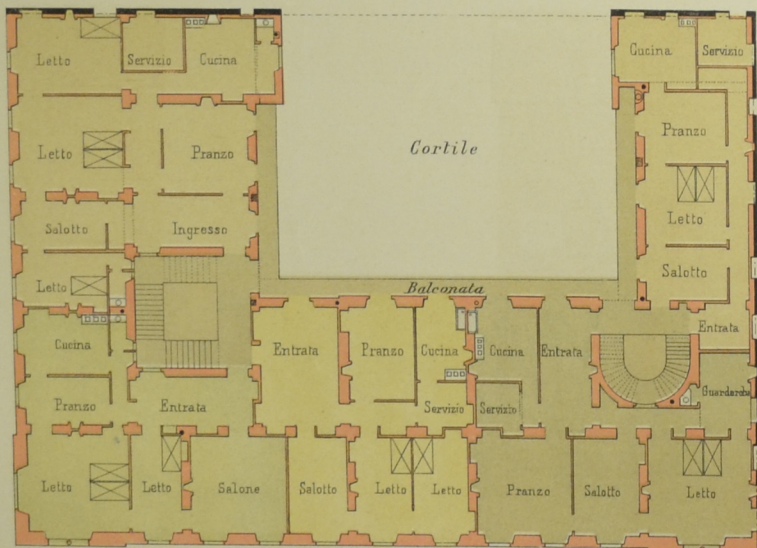
Pianta dei Sotterranei



Pianta del 1° e 2° Piano nobile



Pianta del 3° Piano ed Ammezzati



Pianta dei Sottotetti



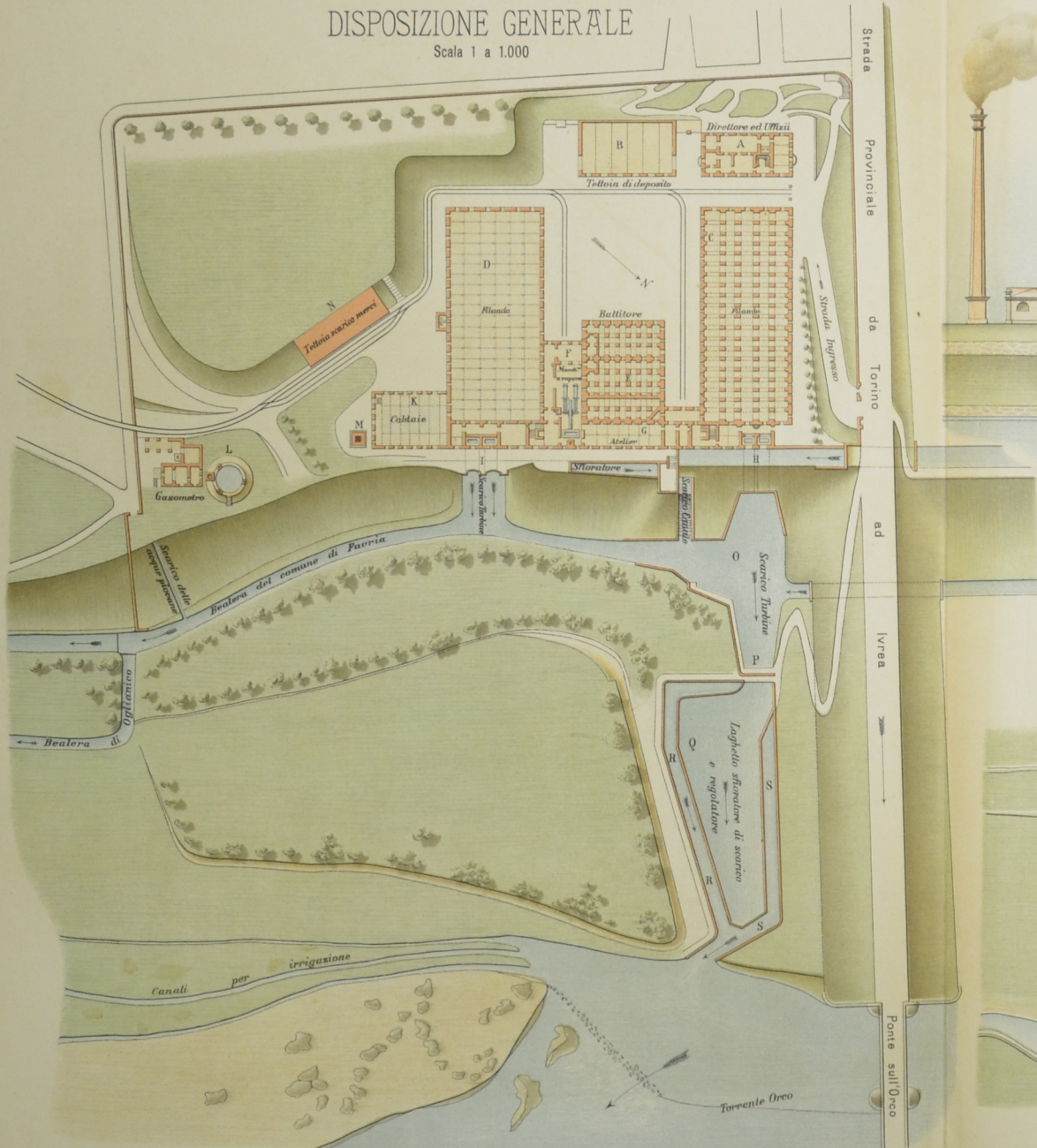


# FABBRICATO INDUSTRIALE — MANIFATTURA DI CUORGNÈ (PIEMONTE)

(DISEGNO DELL'ING. SIG. A. MAUKE.)

## DISPOSIZIONE GENERALE

Scala 1 a 1.000



## Prospetto verso l'ORCO

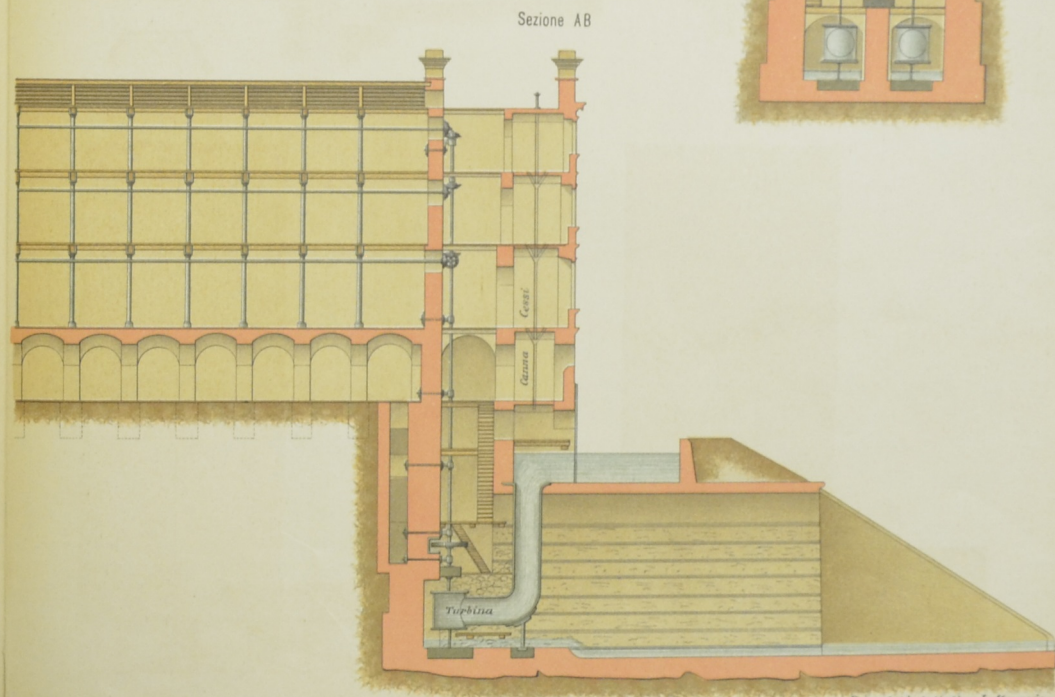
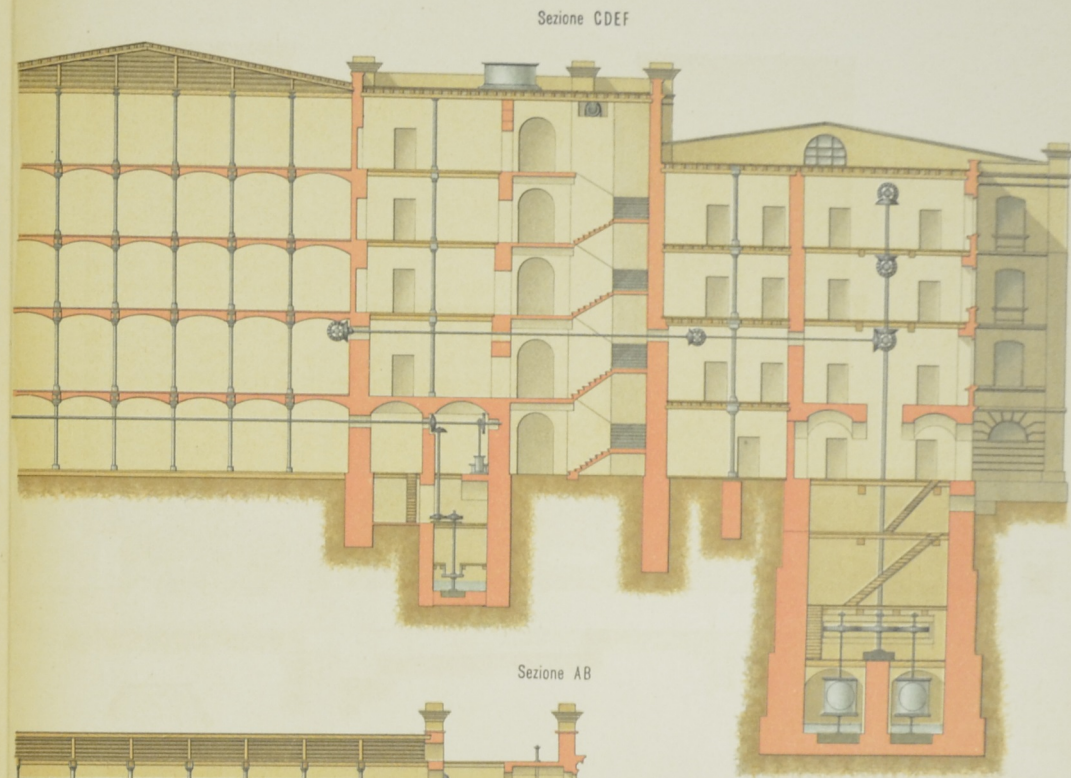
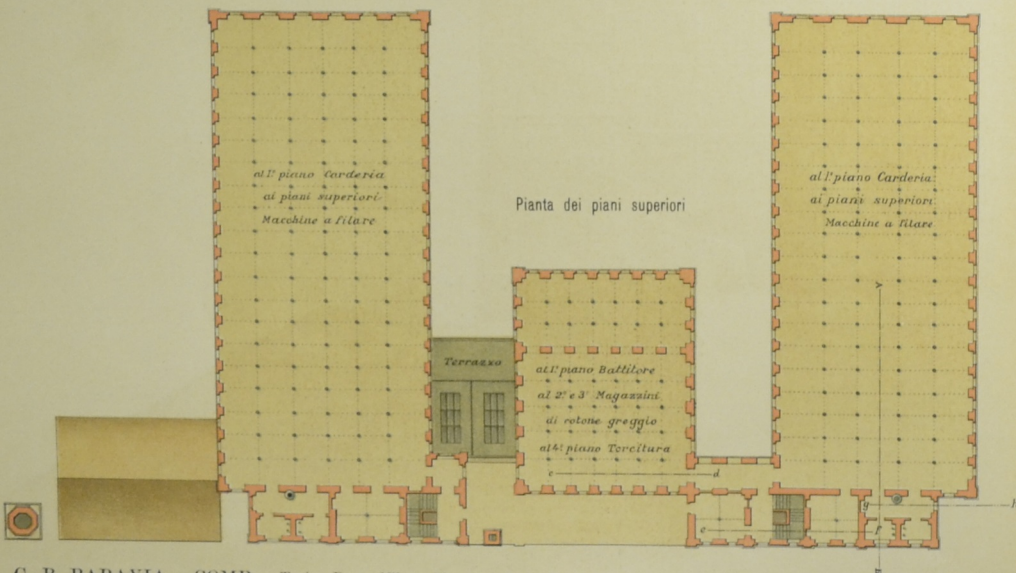
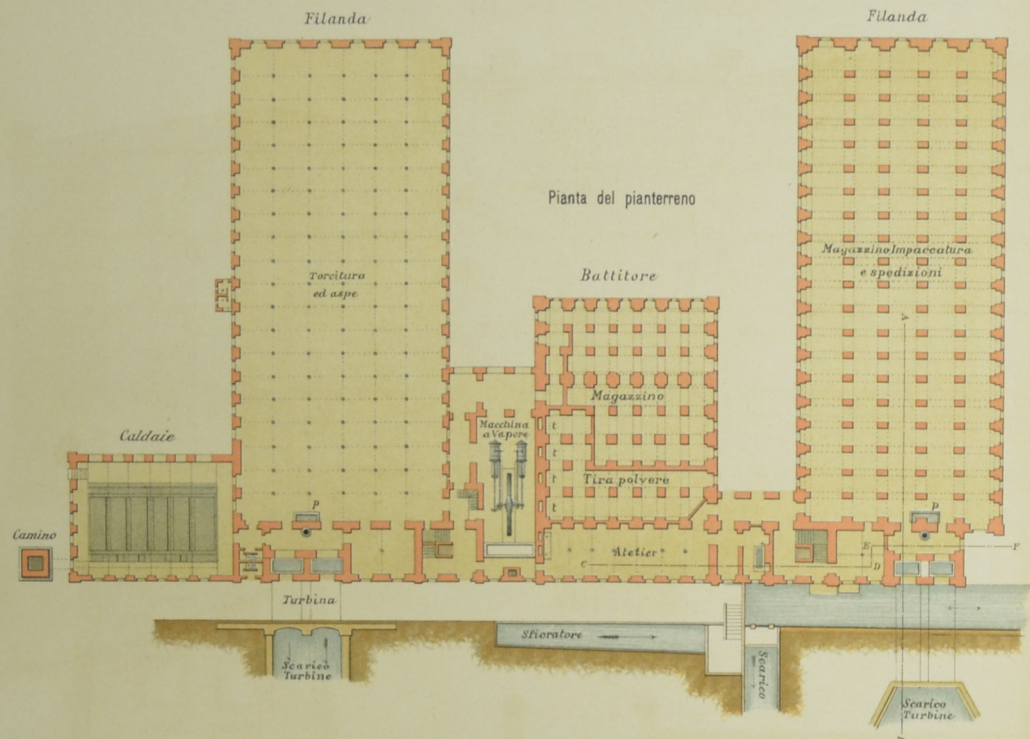
Scala 1 a 500



## Planimetria Generale dello Stabilimento e del Canale

Scala 1 a 10.000



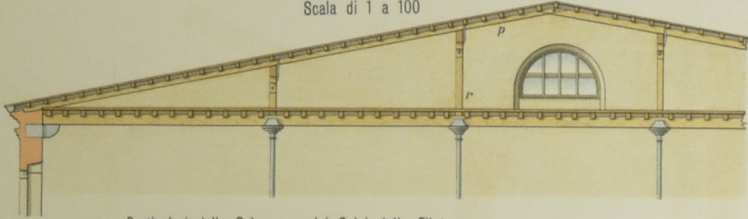


(Disegno dell'Ing. Sig. A. MAUKE)

PARTICOLARI

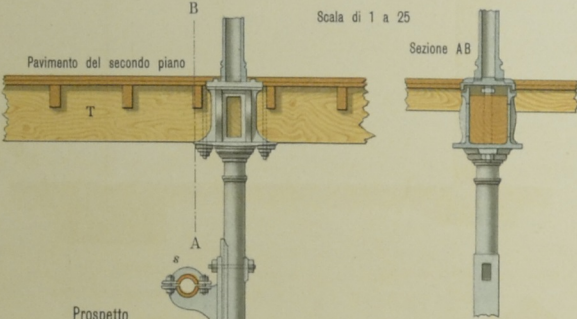
Sezione trasversale al Tetto della Filatura

Scala di 1 a 100



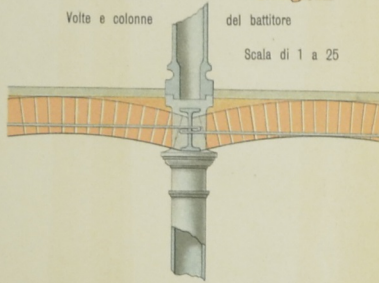
Particolari delle Colonne e dei Solai della Filatura

Scala di 1 a 25



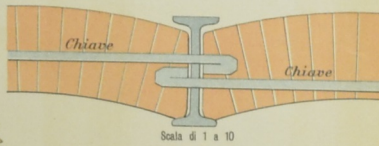
Volte e colonne del battitore

Scala di 1 a 25

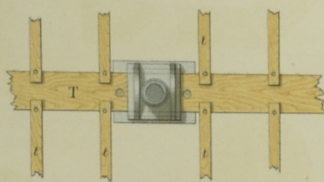


Volte in mattoni sopra ferri a doppio T per il BATTITORE

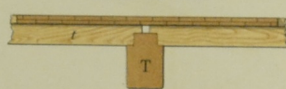
Scala di 1 a 10



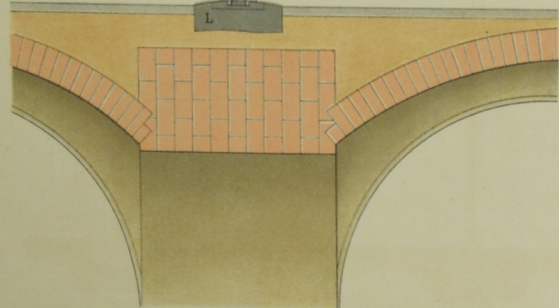
Pianta della colonna ed ossatura del solaio



Sezione del Solaio

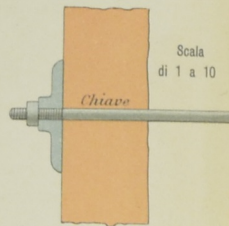


Pavimento del primo piano



Chiavi del Battitore attacco nel muro

Scala di 1 a 10



Camino industriale ottagonale

Scala di 1 a 100

Prospetto e Sezione

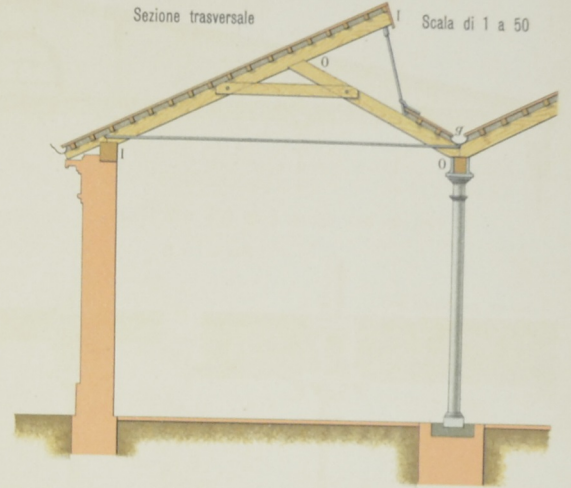


Camino industriale a sezione circolare con parete vuota - o parete doppia con tramezzi di unione radiali

Capannoni per tessiture (detto SHEDS)

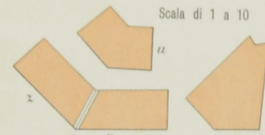
Sezione trasversale

Scala di 1 a 50



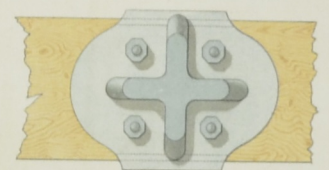
Mattoni speciali per il camino ottagonale

Scala di 1 a 10

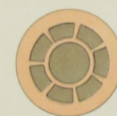


Sezione orizzontale CD delle colonne di sostegno della Tettoia

Scala di 1 a 10



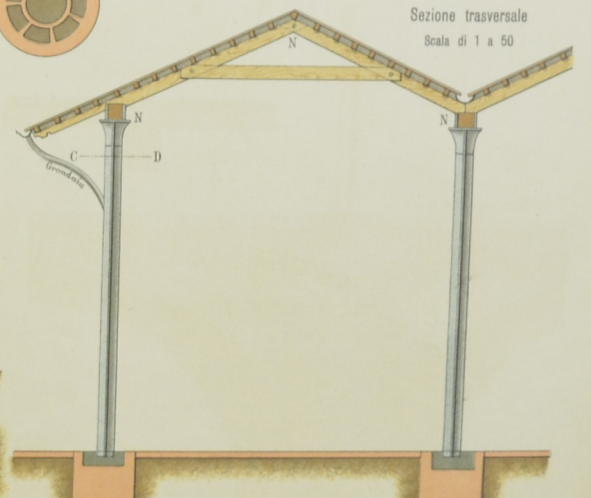
Pianta del camino circolare



Tettoie su travi ferro a Croce

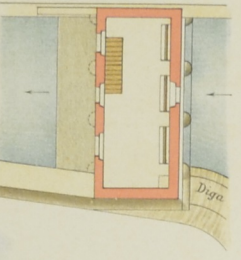
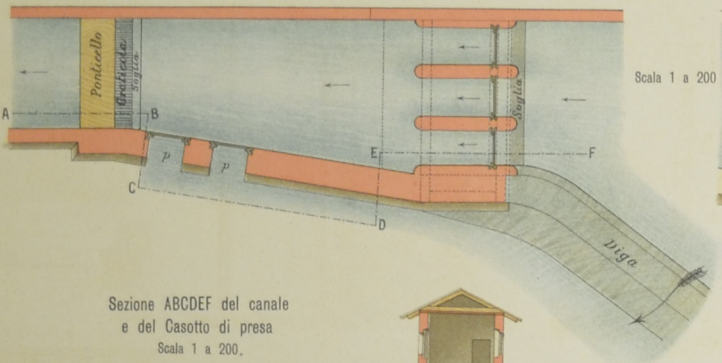
Sezione trasversale

Scala di 1 a 50

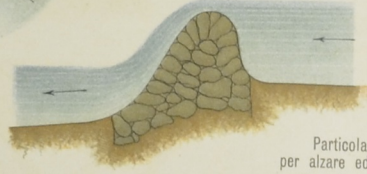


Pianta del canale e Casotto di presa  
Scala 1 a 200

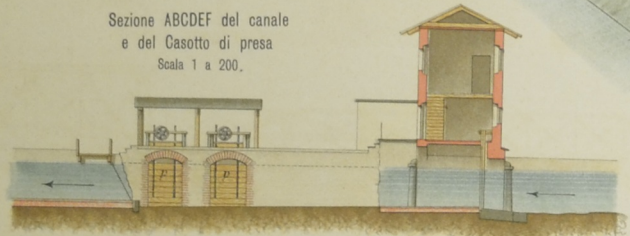
Pianta del Casotto di presa  
superiormente al Canale  
Scala 1 a 200



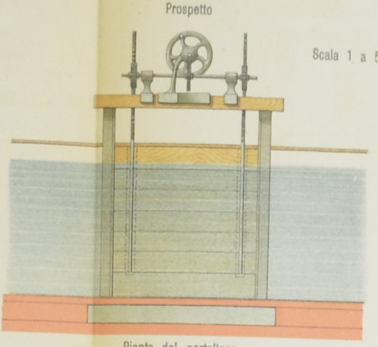
Sezione della diga stabile



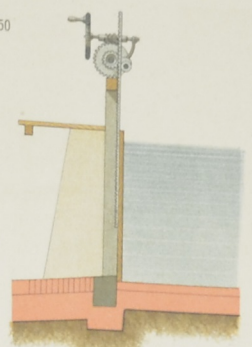
Sezione ABCDEF del canale  
e del Casotto di presa  
Scala 1 a 200.



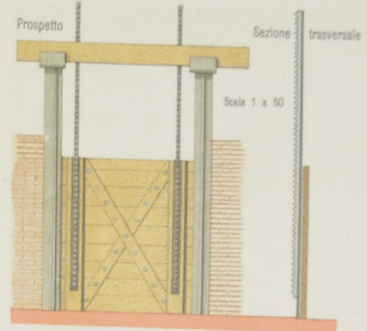
Portelloni  
Scala 1 a 50



Sezione trasversale



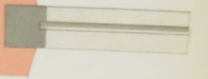
Particolari di portelloni  
con stivioni di ghisa



Stivione di pietra per paratoie  
Sezione sull'asse del canale  
Scala 1 a 20

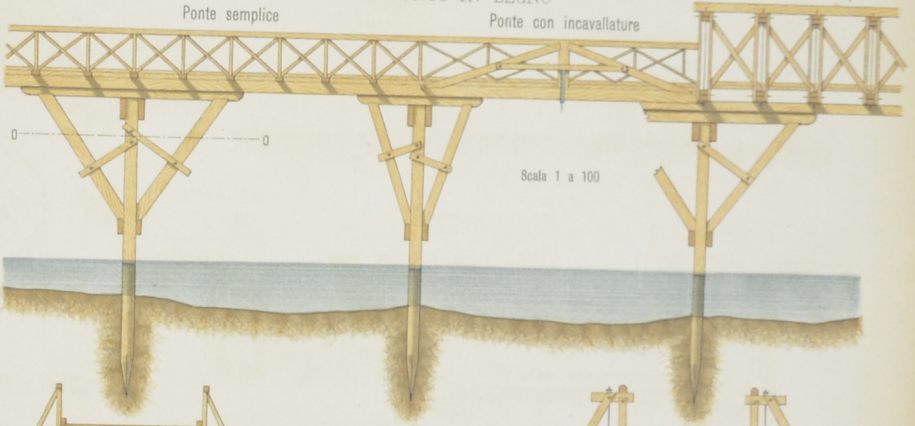


Tirato di Pianta

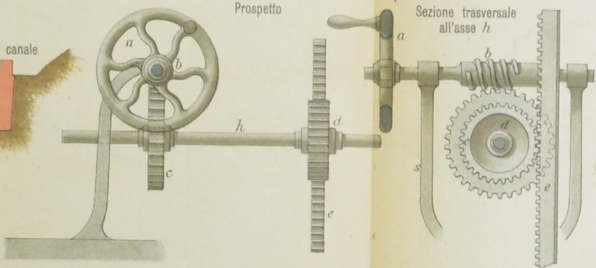


Ponte con travi composte

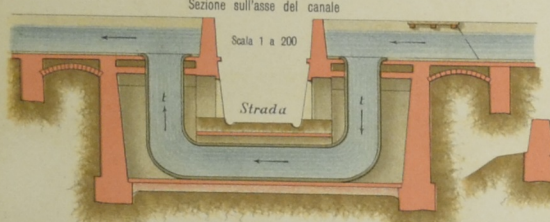
**PONTI IN LEGNO**



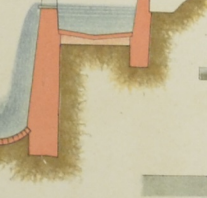
Particolari del meccanismo  
per alzare ed abbassare i portelloni  
Prospetto



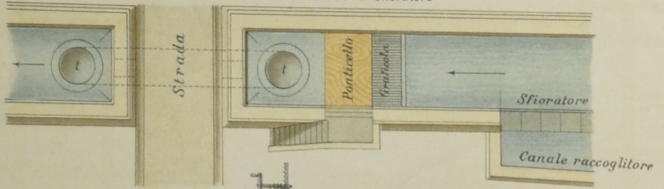
Sifone



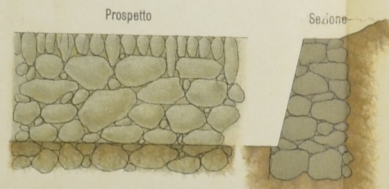
Sfioratore  
Sezione trasversale al canale



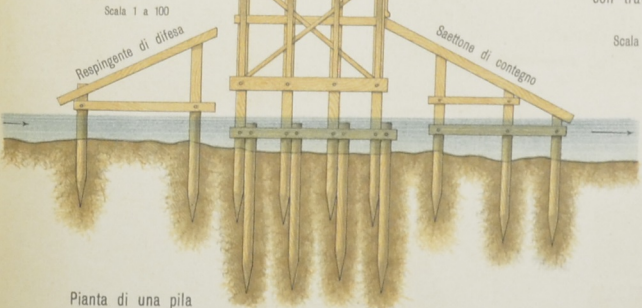
Pianta del canale con sifone e sfioratore



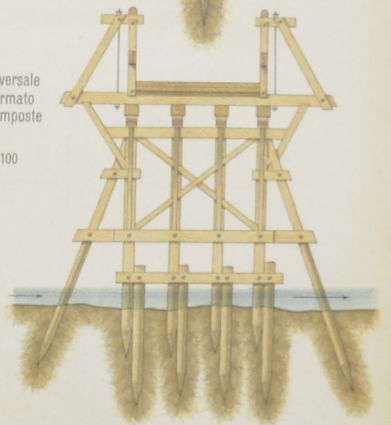
Muro a secco per rivestimento di scarpe



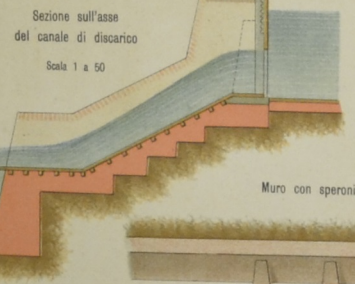
Sezione trasversale  
al ponte semplice  
Scala 1 a 100



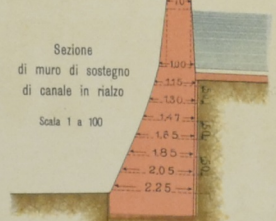
Sezione trasversale  
al ponte formato  
con travi composte  
Scala 1 a 100



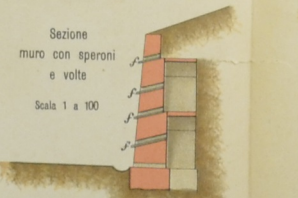
Scaricatore



Sezione  
di muro di sostegno  
di canale in rialzo  
Scala 1 a 100



Sezione  
muro con speroni  
e volte  
Scala 1 a 100

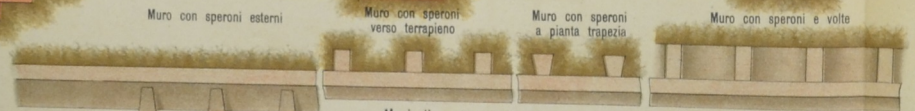


Muro con speroni esterni

Muro con speroni  
verso terrapieno

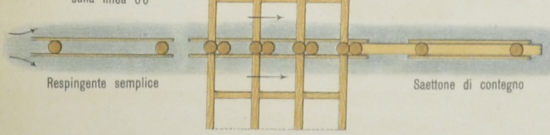
Muro con speroni  
a pianta trapezia

Muro con speroni e volte

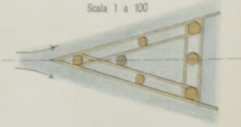


Muri di sostegno di terrapieni

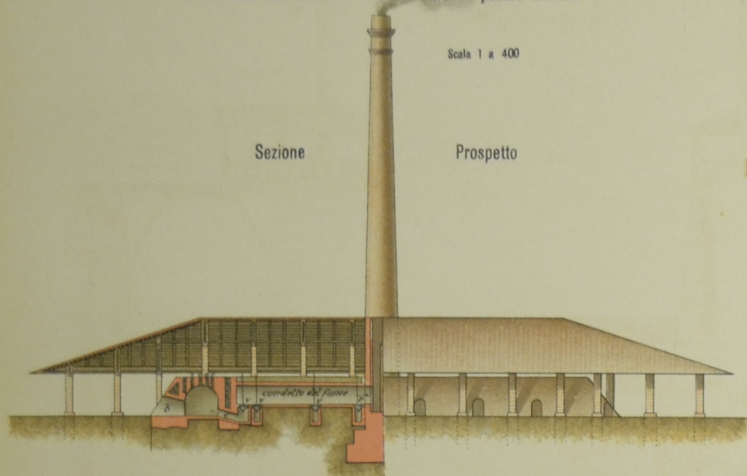
Pianta di una pila  
di ponte in legno  
sulla linea 00



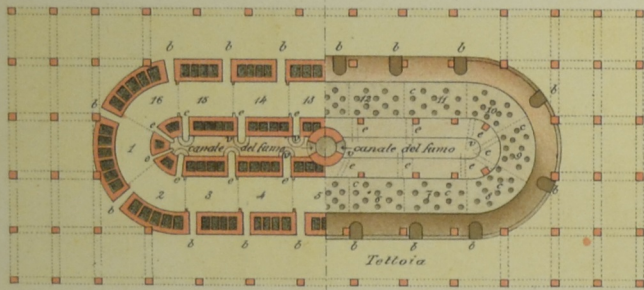
Pianta di un respingente composto



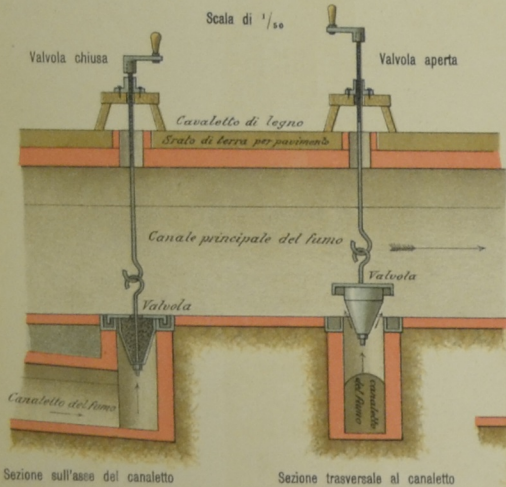
Fornace HOFFMANN a fuoco continuo  
BARBERA AGOSTINO e C<sup>ia</sup> a Beinasco presso Torino



al piano inferiore del forno  
Pianta  
al piano superiore del forno

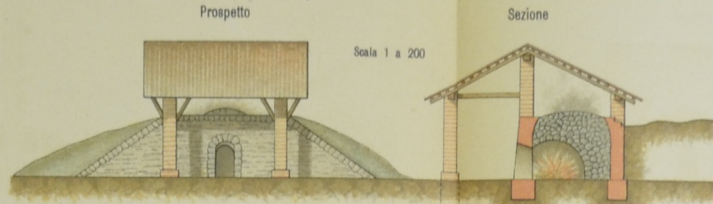


Fornace HOFFMANN - Particolari delle valvole per il tiraggio del fumo

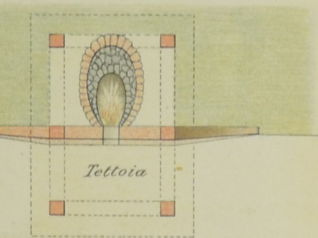


Sezione sull'asse del canaletto  
Sezione trasversale al canaletto

Forno per la cottura della calce



Pianta

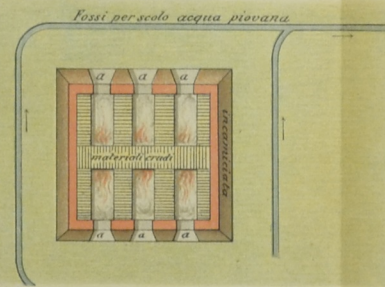


Cottura di laterizi all'aperto in cataste

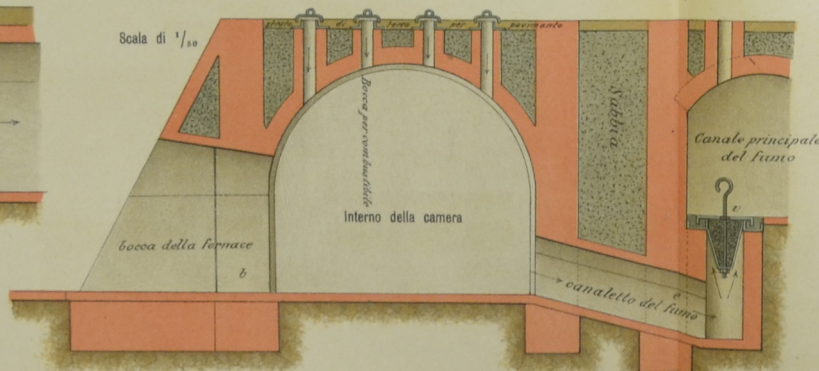
Prospetto



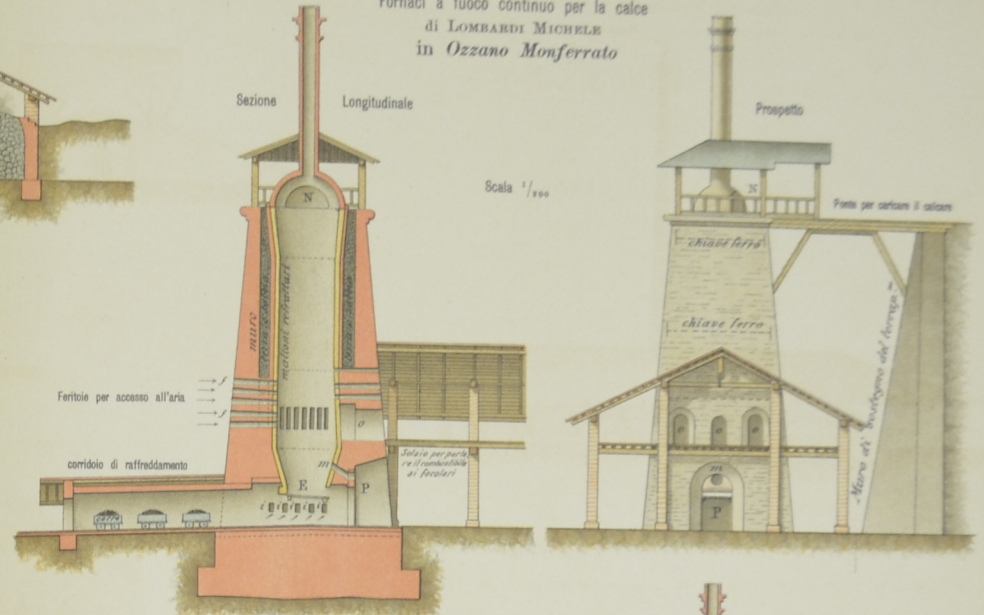
Pianta



Fornace HOFFMANN Sezione trasversale di una camera

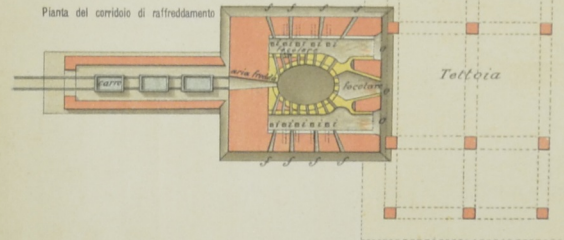


Fornaci a fuoco continuo per la calce  
di LOMBARDI MICHELE  
in Ozzano Monferrato

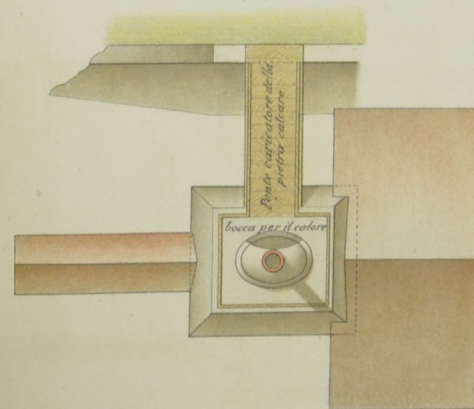


Pianta del forno al piano dei focolari

Sezione Trasversale



Pianta al piano superiore del forno



Pianta del forno per calce sopra le feritoie

Sezione

